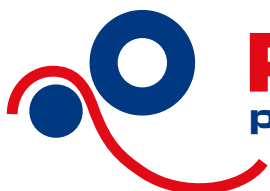


**PRODUCTS CATALOGUE**

**2009**

**🇬🇧 ENGLISH**



**ROTOFLES RICAMBI**  
products and spare parts for printing machines



*Rotofles Ricambi is a young and dynamic company, which guarantees a practical and technical support not only to printing machine users and firms operating in the printing, converting and paper processing industry, but also to manufacturers of flexographic and gravure plants, coater-laminators and slitting-rewinding machines.*

*Our considerable experience in this field enables us to offer our clients a wide, complete and highly competitive range of products and solutions.*

*We aim at new partnerships, making our skills available to printers and end users and sharing the experience we have acquired in the past 10 years of work as direct suppliers.*

*We specialize in spare parts and working equipment, and we are absolutely sure that we can offer you specific products for all your needs.*





**HOSES**

Rotospir	Pag.	5
Rotocord	Pag.	6
Rotopress 10	Pag.	7
Rotopress 20	Pag.	8
Carburpress	Pag.	9
Stark	Pag.	10
Plastiroll	Pag.	11
C20	Pag.	11
P4	Pag.	12
P4-S	Pag.	12
P8	Pag.	13
P8-S	Pag.	13
S98	Pag.	14
CP HT400	Pag.	15
Hypalon	Pag.	16
Cristallo	Pag.	17
Arianna	Pag.	18
Plutone	Pag.	19
Eolo	Pag.	20
Rilsan	Pag.	21
Rilsan Spirals	Pag.	22
Polyurethane	Pag.	23
Silicone Hose	Pag.	24
Ptfe Hose	Pag.	25

**HOSE FITTINGS**

Cam Lock	Pag.	26
Cast Iron Fittings	Pag.	30
Stainless Steel Fittings	Pag.	34
Brass Fittings	Pag.	36
Bronze Fittings	Pag.	38

**CLAMPING SYSTEMS**

Clamps	Pag.	39
Collars	Pag.	40
Staples	Pag.	41

**BALL VALVES**

Brass/Stainless Steel	Pag.	42
Valvaut Valves	Pag.	43

**SEALS**

Glass Fibre Plaits and Cords	Pag.	45
Glass Fibre/Ptfe Fabric	Pag.	46
Expanded Ptfe Strip	Pag.	47
Silicon Cell Sections	Pag.	48
Expanded Silicone Sections	Pag.	48
Compact Silicone Round Sections	Pag.	49



**FITTINGS**

Pffe Rolls .....	Pag.	50
Industrial Wheels .....	Pag.	50
Sealers and adhesives .....	Pag.	50
Handle Range .....	Pag.	51
Seal Ends .....	Pag.	51
Specifically designed Mylar Mudguards .....	Pag.	51
Spare buttons for Mylar Mudguards .....	Pag.	51
Glass Fibre/ Pffe fabric Mudguards .....	Pag.	51
Hoses for Peristaltic Pumps .....	Pag.	52
Polyethylene Side Guides .....	Pag.	52
Specifically designed Gaskets .....	Pag.	52
Pffe Rings .....	Pag.	52
MAR1-CP Clippard Valves .....	Pag.	53
Pneumatic valves .....	Pag.	53
Specifically designed fitted hoses .....	Pag.	53
Filtering .....	Pag.	53
Expansion Joints .....	Pag.	54
Safety Sections .....	Pag.	55

**ELASTOMERS**

Rubber sheets .....	Pag.	56
Rubber Mousse Sections .....	Pag.	57

**RANGE OF PLASTIC MATERIALS**

Polycarbonate .....	Pag.	58
Plastic Materials .....	Pag.	59
Manufacturing of Plastic Materials .....	Pag.	60
Flexible PVC .....	Pag.	61
Mylar .....	Pag.	63

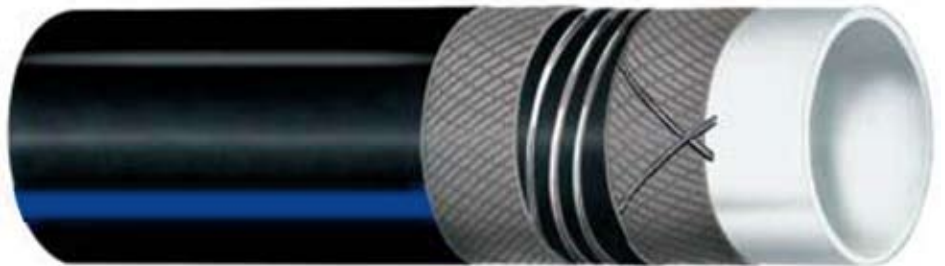
**PLANT ENGINEERING**

Steam Thermoregulation .....	Pag.	64
Diathermic Oil Thermoregulation .....	Pag.	66
Equipment .....	Pag.	67
Plant Engineering .....	Pag.	69
Thermoregulation Units .....	Pag.	70
Flanges .....	Pag.	71
Flange Gaskets .....	Pag.	73

**MECHANICAL PARTS**

Automation Pneumatics .....	Pag.	74
Transmission Components .....	Pag.	74
Joints and Couplings .....	Pag.	75
Antivibration Components .....	Pag.	76

Available diameters
13 x 23
16 x 26
20 x 31
25 x 36
30 x 41
35 x 47
40 x 53
50 x 64



**Uses:** Hose for the suction and delivery of organic and inorganic acids, inorganic bases, oxygen, detergents, water and steam mixtures up to 120° C, oxygenated solvents, vegetable oils and fat, oxydizing agents and ozone.

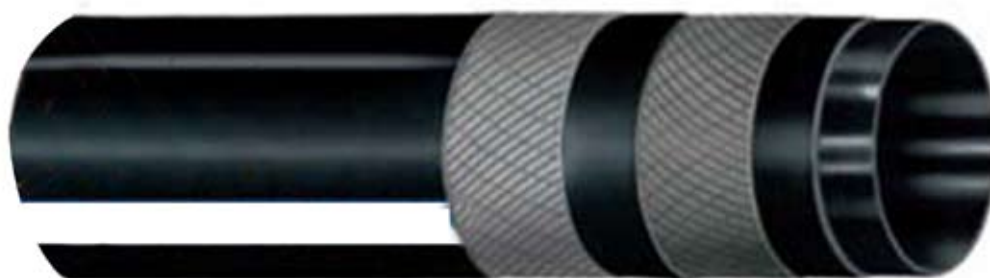
**Specific for Ethyl Acetate.**  
**Other sizes available on request.**

APPEARANCE		COLOUR	
Externally	Smooth, cloth-like surface	Externally	Black
Internally	Specular, smooth	Internally	White

FEATURES		
MANUFACTURING		USE
Substratum	Non-toxic EPDM rubber	Temperature. Between – 40° C and 120° C
Reinforcements	Highly resistant textiles and incorporated steel spiral	*Working pressure: 10 bar
Covering	Antistatic EPDM rubber (R < 1 sq.mt.), abrasion and weather resistant.	*Safety coefficient: ≥ 3
		*Radius of curvature: 4 times *the internal diameter
		*Depression: 650 mm Hg
<p><b>Other features:</b> on request, the hose is available in ready-to-use sizes, with sockets on the tips Complying with the following regulations: ISO 1307 – DIN 7715 T4 – T4 – Substratum BgVV ratified and complying with F.D.A. and D.M. 21/03/73 regulations, and following modifications. Fittings: consisting of clamps, collars, pressing or any other system imposed by plant manufacturers.</p>		
*The above mentioned data refer to use at room temperature		

ELECTRICAL CONDUCTIVITY ON SURFACE	
Substratum	Insulating
Covering	Antistatic $R < 10^6 \Omega$

Available diameters
10 x 22
13 x 23
19 x 29
25 X 37



**Uses:**

Multipurpose hose for the delivery of varnish, inks, paint and similar solvents

Maximum working pressure: 10 Bar.

**Other sizes available on request.**

The above mentioned data refer to use at room temperature.

MANUFACTURING	
Substratum	-UPE (polyethylene at very high molecular weight). Neutral, smooth. -Resistance: in conformity with the Chemical Resistance table.
Reinforcements	-Synthetic, highly resistant cord plies
Covering	Antistatic EPDM black rubber ( $R < 10^6 \Omega$ ) abrasion, ozone and weather resistant. Smooth, cloth-like surface

**TEMPERATURES:**

-Between - 35° C and + 100° C, depending on the conveyed fluids

**SAFETY FEATURES:**

-≥3 times the working pressure.

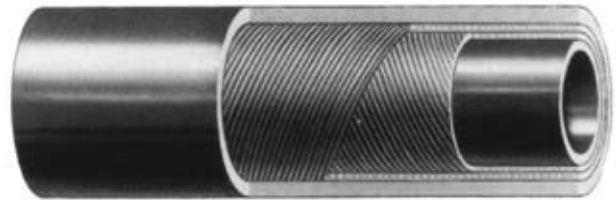
**MANUFACTURING**

Black, smooth substratum made of SBR rubber based mixture

Reinforcements: synthetic textiles

Black, smooth covering made of SBR/EPDM rubber based mixture

Abrasion, ageing and weather resistant


**Uses**







Suitable for the delivery of water and inert fluids, it offers a wide range of industrial and agricultural uses.

**Temperatures**

-30 °C (-22 °F) +80 °C (+176 °F)

**Tolerance**

Complying with the UNI EN ISO 1307 regulations

 D.I. mm	 D.E. mm	 Working pressure			 Bursting pressure			 Weight kg/m	 Min. radius of curvature mm	Roll length m
		MPa	psi	bar	MPa	psi	bar			
8	15	1,0	150,0	10	3,0	450,0	30	0,19	50	100
10	15	1,0	150,0	10	3,0	450,0	30	0,15	60	100
10	17	1,0	150,0	10	3,0	450,0	30	0,22	60	100
12	17	1,0	150,0	10	3,0	450,0	30	0,17	70	100
13	19	1,0	150,0	10	3,0	450,0	30	0,23	80	100
15	21	1,0	150,0	10	3,0	450,0	30	0,25	90	100
16	23	1,0	150,0	10	3,0	450,0	30	0,32	100	100
19	26	1,0	150,0	10	3,0	450,0	30	0,37	110	80
20	30	1,0	150,0	10	3,0	450,0	30	0,59	120	80
22	30	1,0	150,0	10	3,0	450,0	30	0,49	130	80
25	33	1,0	150,0	10	3,0	450,0	30	0,55	150	50
25	35	1,0	150,0	10	3,0	450,0	30	0,70	150	50
30	42	1,0	150,0	10	3,0	450,0	30	1,00	180	40
32	44	1,0	150,0	10	3,0	450,0	30	1,07	190	40



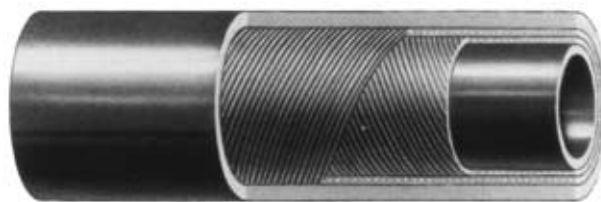
**MANUFACTURING**

Black, smooth substratum made of SBR rubber based mixture

Reinforcements: synthetic textiles

Black, smooth covering made of SBR/EPDM rubber based mixture

Abrasion, ageing and weather resistant



**Uses**

Suitable for compressed air with traces of oil and for some non corrosive fluids, in a wide range of industrial uses

**Temperatures**

-30 °C (-22 °F) +80 °C (+176 °F)

**Tolerance**

Complying with the UNI EN ISO 1307 regulations

D.I. mm	D.E. mm	Working pressure			Bursting pressure			Weight kg/m	Min. radius of curvature mm	Roll length m
		MPa	psi	bar	MPa	psi	bar			
6	14	2,0	300,	20	6,0	900,0	60	0,19	50	100
7	16	2,0	300,0	20	6,0	900,0	60	0,24	60	100
8	17	2,0	300,0	20	6,0	900,0	60	0,27	65	100
10	19	2,0	300,0	20	6,0	900,0	60	0,31	80	100
13	23	2,0	300,0	20	6,0	900,0	60	0,43	105	100
16	26	2,0	300,0	20	6,0	900,0	60	0,50	130	80
19	29	2,0	300,0	20	6,0	900,0	60	0,57	150	50
19	30	2,0	300,0	20	6,0	900,0	60	0,64	150	80
25	37	2,0	300,0	20	6,0	900,0	60	0,88	200	50



**MANUFACTURING**

Black, smooth substratum made of NBR rubber based mixture

Reinforcements: synthetic textiles

Black, smooth covering made of SBR/EPDM rubber based mixture

Abrasion, ageing and weather resistant



**Uses**

Suitable for greasing, fuel, petrol and diesel oil by-products (containing up to 50% of aromatic elements)

**Temperatures**

-25 °C (-13 °F) +80 °C (+176 °F)

**Tolerance**

Complying with the UNI EN ISO 1307/97 regulations

 D.I. mm	 D.E. mm	 Working pressure			 Bursting pressure			 Weight kg/m	 Min. radius of curvature mm	Roll length m
		MPa	psi	bar	MPa	psi	bar			
<b>CARBURPRESS 10 bar</b>										
5	12	1,0	150,0	10	3,0	450,0	30	0,12	40	100
6	12	1,0	150,0	10	3,0	450,0	30	0,11	50	100
6	13	1,0	150,0	10	3,0	450,0	30	0,14	50	100
8	15	1,0	150,0	10	3,0	450,0	30	0,17	65	100
10	17	1,0	150,0	10	3,0	450,0	30	0,20	80	100
13	20	1,0	150,0	10	3,0	450,0	30	0,24	105	100
16	23	1,0	150,0	10	3,0	450,0	30	0,29	130	100
19	27	1,0	150,0	10	3,0	450,0	30	0,39	150	40
25	35	1,0	150,0	10	3,0	450,0	30	0,63	200	50
<b>CARBURPRESS 20 bar</b>										
6	14	2,0	300,0	20	6,0	900,0	60	0,17	50	100
8	17	2,0	300,0	20	6,0	900,0	60	0,24	65	100
10	19	2,0	300,0	20	6,0	900,0	60	0,27	80	100
13	23	2,0	300,0	20	6,0	900,0	60	0,38	105	100
16	26	2,0	300,0	20	6,0	900,0	60	0,44	130	100
19	30	2,0	300,0	20	6,0	900,0	60	0,57	150	80
25	36	2,0	300,0	20	6,0	900,0	60	0,71	200	50

EPDM hose with textile reinforcements, suitable for the conveyance of fluids at temperatures varying between - 30°C and 100°C, with a maximum working pressure of 20 bar(g)

Fluid	Recommended	Not advisable
Ethyl Acetate (100%)	X	
Acetylene (100%)		X
Water	X	
Ethyl Alcohol (100%)	X	
Nitrogen	X	
Petrol		X
Benzol (100%)		X
Sodium Chlorate (100%)		X
Detergents	X	
Ethyl Ether		X
Inks	X	
Liquid Soap	X	
Varnish Solvents		X



Manufactured diameters:	
Internal diameter	External diameter
12,7 mm	20,7 mm
15,8 mm	24 mm
19,4 mm	28,4 mm
25,4 mm	35 mm

Roll length: 40-80 meters



**PLASTIROLL HOSE**

Flexible light-grey hose, consisting of a strong, special PVC section with a helicoidal spiral.

The clockwise and anticlockwise rotation of the spires permits a +/- 35% variation compared to the nominal diameter, which enables to extend the hose from 15 to 45% of its length, according to the diameter.

**Features:**

Working temperatures: - 20°C +80°C

Size: 5 mt standard

**Uses:**

Suitable for ventilation or suction plants requiring the flexible hose to be self-bearing, or whenever the variation of the diameter is necessary during the assembly process.



**C20 HOSE**

Flexible grey hose made of polyester, PVC smeared fabric, with helicoidal a spiral made of harmonic steel wire.

**Features:**

Reagency to fire: CLASS 1

Temperature range: between -20°C and +50°C, up to peaks of +100°C

Radius of curvature: 0,6 x diam.

Sizes: 6 mt standard

**Uses:**

Air conditioning

Mechanical ventilation

Connection between openings and diffusers

Manufactured diameters:	
Internal diameter	External diameter
32 mm	36 mm
55 mm	61 mm
75 mm	81 mm
80 mm	86 mm
95 mm	101 mm
125 mm	131 mm
150 mm	156 mm
200 mm	206 mm

Manufactured diameters:	
Internal diameter	Internal diameter
51 mm	180 mm
63 mm	203 mm
70 mm	228 mm
76 mm	254 mm
80 mm	279 mm
89 mm	305 mm
102 mm	318 mm
110 mm	356 mm
121 mm	406 mm
127 mm	457 mm
133 mm	508 mm
140 mm	559 mm
152 mm	610 mm
160 mm	



**P4 HOSE**

Flexible hose made of silicone smeared glass fibre fabric, with internal and visible spiral consisting of copper plated harmonic steel wire, external fibre glass cord. Available on request in the self-extinguishing version V-0 (UL 94).

**Features:**

- Colour: brick red
- Working temperatures: -60°C +270°C, with peaks up to 300°C
- Axial compressibility: 30%
- Sizes: 4 mt standard

**Uses:**

- Suction plants
- Air blowing at high temperatures
- Suitable for solid substances such as dust, powders and fibres
- Good resistance to solvent fumes



**P4-S HOSE**

Flexible brick red hose, made of a double layer of silicone smeared fibre glass fabric. Incorporated spiral consisting of copper plated harmonic steel wire, with double external cord made of glass fibre.

**Features:**

- Colour: brick red
- Working temperatures: -60°C +270°C, with peaks up to 300°C
- Axial compressibility: 30%
- Sizes: 4 mt standard

**Uses:**

- Suction plants
- Air blowing at high temperatures
- Suitable for solid substances such as dust, powders and fibres
- Good resistance to solvent fumes

Manufactured diameters:	
Internal diameter	Internal diameter
19 mm	80 mm
25 mm	83 mm
28 mm	90 mm
30 mm	95 mm
32 mm	102 mm
38 mm	114 mm
39 mm	120 mm
41 mm	127 mm
44 mm	130 mm
51 mm	140 mm
55 mm	152 mm
57 mm	160 mm
60 mm	165 mm
63 mm	180 mm
64 mm	203 mm
65 mm	229 mm
70 mm	254 mm
76 mm	305 mm

Manufactured diameters:	
Internal diameter	Internal diameter
19 mm	80 mm
25 mm	83 mm
28 mm	90 mm
30 mm	95 mm
32 mm	102 mm
38 mm	114 mm
39 mm	120 mm
41 mm	127 mm
44 mm	130 mm
51 mm	140 mm
55 mm	152 mm
57 mm	160 mm
60 mm	165 mm
63 mm	180 mm
64 mm	203 mm
65 mm	229 mm
70 mm	254 mm
76 mm	305 mm





**P8 HOSE**

Flexible black hose consisting of a fibre glass fabric layer smeared with neoprene, with internal and visible spiral consisting of copper plated harmonic steel wire, and external fibre glass cord.

**Features:**

- Colour: black
- Working temperatures: -55°C +130°C, with peaks up to 150°C
- Axial compressibility: 30%
- Complying with the following flame-proof regulations: M1 class (UNE 23723-90) CL V-O (UL 94)
- Sizes: 4 mt standard

**Uses:**

- Industrial suction and ventilation
- Cooling of electronic equipment
- Diesel air suction
- Heating for motorvehicles
- Fairly good resistance to solvent fumes



**P8-S HOSE**

Flexible black hose consisting of a double layer of fibre glass fabric smeared with neoprene, with internal spiral consisting of copper plated harmonic steel wire, and double external fibre glass cord.

**Features:**

- Colour: black
- Working temperatures: -55°C +130°C, with peaks up to 150°C
- Axial compressibility: 30%
- Complying with the following flame-proof regulations: M1 class (UNE 23723-90) CL V-O (UL 94)
- Sizes: 4 mt standard

**Uses:**

- Industrial suction and ventilation
- Cooling of electronic equipment
- Diesel air suction
- Heating for motorvehicles
- Fairly good resistance to solvent fumes

Manufactured diameters:	
Internal diameter	Internal diameter
19 mm	83 mm
25 mm	90 mm
28 mm	95 mm
30 mm	102 mm
32 mm	114 mm
35 mm	120 mm
38 mm	121 mm
39 mm	127 mm
41 mm	130 mm
44 mm	140 mm
51 mm	150 mm
55 mm	152 mm
57 mm	160 mm
60 mm	165 mm
63 mm	180 mm
64 mm	203 mm
65 mm	229 mm
70 mm	254 mm
76 mm	305 mm
80 mm	

Manufactured diameters:	
Internal diameter	Internal diameter
19 mm	83 mm
25 mm	90 mm
28 mm	95 mm
30 mm	102 mm
32 mm	114 mm
35 mm	120 mm
38 mm	121 mm
39 mm	127 mm
41 mm	130 mm
44 mm	140 mm
51 mm	150 mm
55 mm	152 mm
57 mm	160 mm
60 mm	165 mm
63 mm	180 mm
64 mm	203 mm
65 mm	229 mm
70 mm	254 mm
76 mm	305 mm
80 mm	



### S98 HOSE

Flexible black hose made of polyamide fabric soaked in santoprene, with internal harmonic steel spiral.

#### Features:

Colour: black

Working temperatures: -20°C +125°C, with peaks up to +150°C

Reagency to fire: B1 class (DIN 4102)

Sizes: 10 mt standard (on request, 20 mt rolls with diameter up to 200, whereas the maximum size is 6 mt, for 600 and 700 diameters)

#### Uses:

- Industrial suction
- Gas suction for motorvehicles
- Granule suction
- Conveyance of solvents and acids

Manufactured diameters:	
Internal diameter	Internal diameter
50 mm	150 mm
60 mm	160 mm
65 mm	180 mm
70 mm	200 mm
75 mm	225 mm
80 mm	250 mm
90 mm	300 mm
100 mm	350 mm
110 mm	400 mm
120 mm	450 mm
125 mm	500 mm
130 mm	600 mm
140 mm	700 mm

**Manufactured diameters:**

Internal diameter	External diameter
38 mm	50 mm
40 mm	52 mm
50 mm	62 mm
55 mm	67 mm
60 mm	72 mm
65 mm	77 mm
70 mm	82 mm
75 mm	87 mm
80 mm	92 mm
90 mm	102 mm
100 mm	112 mm
110 mm	122 mm
120 mm	132 mm
125 mm	137 mm
130 mm	142 mm
140 mm	152 mm
150 mm	162 mm
160 mm	172 mm
170 mm	182 mm
180 mm	192 mm
200 mm	212 mm
225 mm	237 mm
250 mm	262 mm
275 mm	287 mm
300 mm	312 mm
315 mm	327 mm
325 mm	337 mm
350 mm	362 mm
400 mm	412 mm
450 mm	462 mm
500 mm	512 mm
600 mm	612 mm
700 mm	712 mm
800 mm	812 mm
900 mm	912 mm
1000 mm	1012 mm

Flexible suction hose, particularly suitable for gas substances such as steam and fumes.

It is made of fibre glass fabric reinforced with stainless steel wires and has a special covering suitable for high temperatures. External electroplated steel spiral.

Highly flexible and compressible (3:1).

**Features:**

- Colour: grey
- Working temperatures: -60°C + 400°C
- The external metal section makes it resistant to external abrasion.
- Hardly inflammable, in compliance with DIN 4102-B1 regulations.
- Radius of curvature: almost equivalent to the external diameter.
- Size: 6 mt standard.

**Uses:**

- Suitable for dust tapping plants and fuel gas suction plants, furnace fans and for the suction of welding fumes;
- Suitable for appliances requiring flexible, hardly inflammable hoses;
- Suitable for solid substances such as dust, powders and fibres.



Flexible suction hose particularly suitable for gas substances such as steam and fumes. It is made of Hypalon rubberized polyester fabric. External electroplated steel spiral. Highly flexible and compressible (3:1).

**Features:**

- Colour: black.
- Working temperatures: -40°C +170°C
- Resistant to vibrations.
- The external metal section makes it resistant to external abrasion.
- Good resistance to chemical agents, alkaline solutions and acids.
- Radius of curvature: almost equivalent to the external diameter.
- Size: 6 mt standard.

**Uses:**

- Suitable for dust tapping plants and fuel gas suction plants, furnace fans and for the suction of welding fumes;
  - Suitable for appliances requiring flexible, hardly inflammable hoses;
  - Suitable for solid substances such as dust, powders and fibres.
  - **Suitable for the suction of solvent fumes**
- On request, available with PTFE substatum.



Manufactured diameters:	
Internal diameter	External diameter
38 mm	50 mm
40 mm	52 mm
50 mm	62 mm
55 mm	67 mm
60 mm	72 mm
65 mm	77 mm
70 mm	82 mm
75 mm	87 mm
80 mm	92 mm
90 mm	102 mm
100 mm	112 mm
110 mm	122 mm
120 mm	132 mm
125 mm	137 mm
130 mm	142 mm
140 mm	152 mm
150 mm	162 mm
160 mm	172 mm
170 mm	182 mm
180 mm	192 mm
200 mm	212 mm
225 mm	237 mm
250 mm	262 mm
275 mm	287 mm
300 mm	312 mm
315 mm	327 mm
325 mm	337 mm
350 mm	362 mm
400 mm	412 mm
450 mm	462 mm
500 mm	512 mm
600 mm	612 mm
700 mm	712 mm
800 mm	812 mm
900 mm	912 mm
1000 mm	1012 mm

Flexible hose made of transparent non-toxic plasticized PVC.

Resistant to weather and to most chemical products.

Uses:

Suitable for alimentary fluids. The hose complies with the DM 21.3.73 regulations and following modifications.

Working temperatures: between  $-10^{\circ}\text{C}$  and  $+50^{\circ}\text{C}$

**Manufactured Sizes**

Internal diameter	External diameter	Roll length
3 mm	5 mm	200 mt
4 mm	6 mm	200 mt
4 mm	7 mm	200 mt
5 mm	8 mm	200 mt
6 mm	9 mm	200 mt
7 mm	10 mm	100 mt
8 mm	12 mm	100 mt
10 mm	14 mm	100 mt
12 mm	17 mm	100 mt
14 mm	19 mm	100 mt
16 mm	22 mm	100 mt
18 mm	24 mm	100 mt
20 mm	27 mm	100 mt
22 mm	30 mm	50 mt
25 mm	33 mm	50 mt
30 mm	38 mm	50 mt





Flexible hose made of plasticized PVC with polyester yarn reinforcements.  
Resistant to weather and most chemical products.

**Uses:**

Suitable for the conveyance of compressed air and alimentary fluids. The hose complies with the DM 21.3.73 regulations and following EU modifications/updates.

The hose is particularly suitable for the transfer of watery food products, acids and spirits, with the exception of fat food.

Working temperatures: between -10°C and +60°C



**General and dimensional features**

Internal diameter		External diameter	Working pressure	Bursting pressure	Roll length
mm	inch	mm	kg/cm <sup>2</sup>	kg/cm <sup>2</sup>	mt
6		12	18	54	100
8	5/16"	14	15	45	100
10	3/8"	16	15	45	100
12		18	15	45	100
13	1/2"	19	12	36	100
16	5/8"	22	10	30	50
19	3/4"	26	10	30	50
25	1"	33	8	24	50
30		38	6	18	50
32	1" 1/4	42	6	18	50
38	1" 1/2	48	5	15	50
40		50	5	15	50
50	2"	62	4	12	50

Plasticized PVC hose containing a steel reinforcement spiral. Smooth internal and external surfaces. Extremely flexible. Resistant to weather and most chemical products.

**Uses:**

Particularly suitable for the suction and conveyance of fluids. The hose complies with the DM 21.3.73 regulations and following EU modifications. The hose is particularly suitable for the conveyance of watery food products, acids and spirits, with the exception of fat food.

Working temperatures: between  $-10^{\circ}\text{C}$  and  $+60^{\circ}\text{C}$ .

**General and dimensional features:**

Internal diameter		External diameter	Radius of curvature	Working/Bursting pressure		Vacuum	Roll length
mm	inch	mm	mm	kg/cm <sup>2</sup>	kg/cm <sup>2</sup>	m H <sub>2</sub> O	mt
6		12	13	7	35	9,5	60
8		15	16	7	35	9,5	60
10		16	18	7	35	8,5	60
12		18	23	6	30	8,5	60
14		20	26	6	30	8,5	60
16	5/8"	22,4	30	6	30	8,5	60
18		24	32	5	25	8,5	60
20	3/4"	26	34	5	25	8,5	60
22		28	38	5	25	8,5	60
25	1"	32	42	5	25	8,5	60
30		38	50	4	20	8,5	60
32	1" 1/4	41	53	4	20	8,5	60
35		44	58	4	20	8,5	60
38	1" 1/2	47	63	4	20	8,5	30
40		50	66	4	20	8,5	30
45	1" 3/4	55	74	4	20	8	30
50	2"	60	82	4	20	8	30
60		72	130	3,6	18	8	30
64	2" 1/2	75	138	3,6	18	8	30
70		83	151	3,6	18	7	30
76	3"	90	164	3,6	18	7	30
80		93	172	3,6	18	7	20
90	3" 1/2	104	192	3	15	7	20
102	4"	116	215	2,4	12	7	20
105		120	221	2,4	12	7	20





Plasticized PVC hose with reinforcement spiral made of stiff shock resistant PVC. Smooth internal surface, corrugated external one. Very light and flexible. Resistant to weather and most chemical products.

**Uses:**

- Suction of air, fumes, gas, dust, sawdust and shavings.
- Air conditioning, ventilation

On request, it can be manufactured in an antistatic version.

Working temperatures: between -10°C and +50°C



**General and dimensional features:**

Internal diameter		Min. Thickness	Max. Thickness	Radius of curvature	Vacuum	Roll length
mm	inch	mm	mm	mm	m H <sub>2</sub> O	mt
19	3/4"	1	2,3	25	4	50
20		1	2,3	26	4	50
25	1"	1	2,5	32	4	50
30		1	2,9	35	3,5	50
32	1" 1/4	1	3,0	40	3,5	50
35		1	3,0	42	3,5	50
38	1" 1/2	1	3,2	45	3	50
40		1	3,3	50	3	50
45		1	3,5	55	3	50
50		1	3,9	60	3	50
52	2"	1	3,9	60	3	50
55		1	3,9	65	3	50
60		1	4,0	68	3	50
63	2" 1/2	1	4,0	70	3	50
70		1,2	4,2	85	3	50
76	3"	1,2	4,3	100	2,5	50
80		1,2	4,9	140	2,5	50
90	3" 1/2	1,2	5,0	150	2,5	30
100		1,2	5,6	155	2,5	30
102	4"	1,2	5,6	155	2,5	30
110		1,2	5,8	170	2,5	30
120		1,2	5,8	180	2,5	30
127	5"	1,2	5,8	190	2,5	30
130		1,2	5,8	190	2,5	30
140		1,2	6,1	195	2	30
150		1,2	6,3	200	2	20
160		1,4	6,8	205	1,5	20
170		1,4	6,8	210	1,5	20
180		1,4	6,8	220	1,5	20
200		1,4	6,8	240	1,5	20
250	10"	1,4	7,1	280	1	10
300	12"	1,4	7,4	330	1	10



Flexible hoses made of polyamide 12 and 11 (Rilsan), in compliance with the DIN74324 – 73378 regulations. Suitable for temperatures between  $-40^{\circ}\text{C}$  and  $+80^{\circ}\text{C}$ . Excellent resistance to hydrocarbons, oils and chemical agents.

The polyamide hose guarantees remarkable mechanical performances.

Standard 100 mt packaging.

**General and dimensional features**

Standard sizes	Standard colours	Bursting pressure at $23^{\circ}\text{C}$ (bar)	Working pressure at $23^{\circ}\text{C}$ (bar)	Radius of curvature (mm)	Diameter allowance	
					External	Internal
3 x 1,5	Black	130	39	15	0,10	0,10
4 x 2,5	Neutral, black and coloured	111	33	20	0,10	0,10
4 x 2,7	Neutral, black and coloured	77	23	25	0,10	0,10
4 x 2	Neutral, black and coloured	130	39	20	0,10	0,10
5 x 3	Neutral	110	33	25	0,10	0,10
6 x 4	Neutral, black and coloured	90	27	30	0,10	0,10
8 x 6	Neutral, black and coloured	68	20	40	0,10	0,10
10 x 8	Neutral, black and coloured	53	16	60	0,10	0,10
10 x 7	Black	85	25	70	0,10	0,10
12 x 10	Neutral, black and coloured	44	13	85	0,15	0,13
12 x 9	Black and coloured	59	18	70	0,15	0,13
12 x 8	Black and coloured	80	24	80	0,15	0,13
14 x 12	Neutral, black and coloured	37	11	86	0,15	0,13

**Available colours:**

**Neutral,**  
**Black,**  
**Dark Blue,**  
**Red,**  
**Green,**  
**Yellow,**  
**Orange,**  
**Light Blue.**



Flexible spirals made of polyamide 12 and 11 (Rilsan), in compliance with the DIN74324 – 73378 regulations. Suitable for temperatures between  $-40^{\circ}\text{C}$  and  $+80^{\circ}\text{C}$ . Excellent resistance to hydrocarbons, oils and chemical agents.

The spirals have an exceptional elastic memory, due to the remarkable mechanical performances of polyamide 12 and 11,

Standard 15 and 30 mt lengths.



<b>Dimensional features</b>	
<b>Standard sizes</b>	<b>Standard Colours</b>
4 x 2	Orange and dark blue
6 x 4	Orange and dark blue
8 x 6	Orange and dark blue
10 x 8	Orange and dark blue
12 x 10	Orange and dark blue
15 x 12	Orange and dark blue



Flexible A98 polyurethane hoses with polyester base, suitable for temperatures between  $-40^{\circ}\text{C}$  and  $+50^{\circ}\text{C}$  and sensitive both to hydrolysis and UV rays. They are used mainly for the conveyance of compressed air.

The polyurethane hose guarantees considerable flexibility.

Standard 100 mt packagings.


**General and dimensional features**

Standard sizes	Standard colours	Bursting pressure at $23^{\circ}\text{C}$ (bar)	Working pressure at $23^{\circ}\text{C}$ (bar)	Radius of curvature (mm)	Diameter allowance	
					External	Internal
4 x 2,5	Neutral, black and light blue	35	11	15	0,15	0,15
4 x 2	Neutral, black and light blue	40	13	20	0,15	0,15
5 x 3	Neutral	35	11	22	0,15	0,15
6 x 4	Neutral, black, light blue and red	30	10	25	0,15	0,15
8 x 6	Neutral, black, light blue and red	22	7	33	0,15	0,15
8 x 5,5	Light blue	26	8	40	0,15	0,15
10 x 8	Neutral, black, light blue and red	16	5	50	0,15	0,15
12 x 9	Light blue	25	8	55	0,15	0,15

Flexible hose made of semitransparent silicone. It is smooth and suitable for temperatures between  $-60^{\circ}\text{C}$  and  $+230^{\circ}\text{C}$ . Excellent resistance to chemical agents and solvents, high thermal resistance.

The silicone hose has non-toxic properties and is easy to sterilize.



<b>Dimensional features</b>	
<b>Standard Cizes</b>	<b>Standard Colours</b>
4x2	Neutro
6x4	Neutro
8x6	Neutro
10x6	Neutro
12x8	Neutro
14x10	Neutro
16x14	Neutro

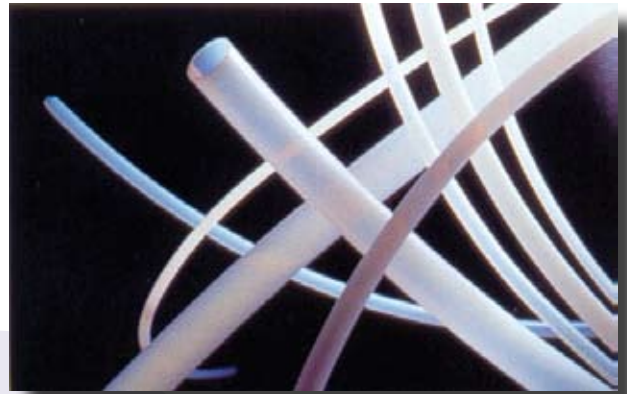
Other sizes available on request.

Flexible PTFE hose, suitable for temperatures between  $-200^{\circ}\text{C}$  and  $+260^{\circ}\text{C}$ . Excellent resistance to chemical agents and solvents, high thermal resistance and low friction coefficient.

The PTFE hose has non-toxic and non-adhesive properties

Available on request: graphite charged antistatic PTFE hose.

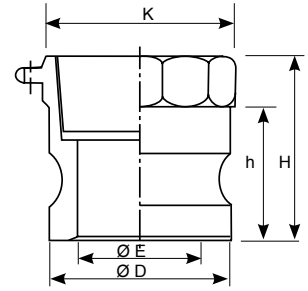
Colour: black.



<b>General and dimensional features</b>			
<b>Standard sizes</b>	<b>Standard colours</b>	<b>Internal diameter allowance (mm)</b>	<b>Surface thickness (mm)</b>
2 x 4	Neutral	$\pm 0,20$ mm	1
4 x 6	Neutral	$\pm 0,25$ mm	1
6 x 8	Neutral	$\pm 0,30$ mm	1
8 x 10	Neutral	$\pm 0,30$ mm	1
10 x 12	Neutral	$\pm 0,35$ mm	1
12 x 14	Neutral	$\pm 0,35$ mm	1
14 x 16	Neutral	$\pm 0,40$ mm	1
50/100 mt rolls			

**Quick “A” type CAM-LOCK fittings**

Body material:  
Aluminium  
Bronze  
Stainless Steel



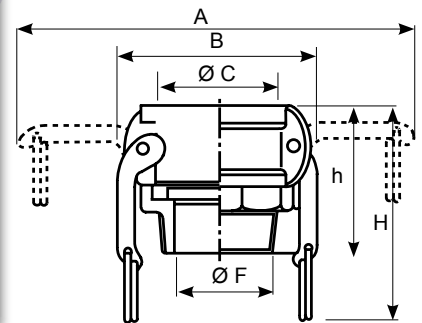
SIZE	inches	1/2"	3/4"	1"	1"1/4	1"1/2	2"	2"1/2	3"	4"	5"	6"
	mm	15	20	25	32	40	50	65	80	100	125	150
D		32	32	37	45	53	63	76	92	120	146	176
E		14	19	24	29	37	46	55	73	98	122	148
K		32	38	41	51	57	71	84	100	129	168	192
h		26	26	32	41	42	48	50	50	53	55	60
H		41	41	49	54	55	64	70	70	80	79	86

sizes are indicated in mm

On request, 1/2" x 3/4" are available (thread 1/2", body 3/4").

**Quick “B” type CAM-LOCK fittings**

Body material:  
Aluminium  
Bronze  
Stainless Steel  
EPDM, VITON, PTFE, NBR or SILICONE gaskets.



SIZE	inches	1/2"	3/4"	1"	1"1/4	1"1/2	2"	2"1/2	3"	4"	5"	6"
	mm	15	20	25	32	40	50	65	80	100	125	150
A		116	116	125	177	188	197	210	248	280	306	595
B		50	50	60	80	89	97	110	135	165	190	254
C		32	32	37	46	53	63	76	92	120	146	176
F		16	22	26	35	38	50	61	75	94	117	142
h		33	33	40	49	48	52	57	60	60	65	70
H		52	52	62	67	70	79	89	91	102	105	115

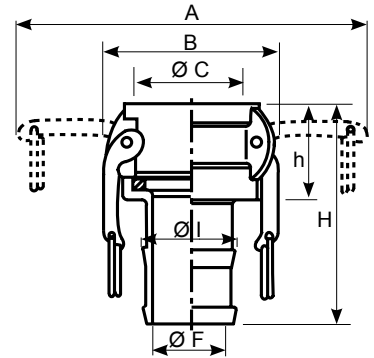
sizes are indicated in mm

On request, 1/2" x 3/4" are available (thread 1/2", body 3/4").

**Quick “C” type CAM-LOCK fittings**

Body material:  
Aluminium  
Bronze  
Stainless Steel

EPDM, VITON, PTFE, NBR or SILICONE gaskets.



SIZE	inches	1/2"	3/4"	1"	1"1/4	1"1/2	2"	2"1/2	3"	4"	5"	6"
	mm	15	20	25	32	40	50	65	80	100	125	150
A		-	116	125	177	188	197	210	248	280	306	595
B		-	50	60	80	89	97	110	135	165	190	254
C		-	32	37	46	53	63	76	92	120	146	176
F		-	14	20	25	32	45	57	67	89	114	142
I		-	21	27	34	41	53	67	79	105	134	157
h		-	33	40	49	48	55	57	59	62	65	70
H		-	84	98	103	106	127	137	160	170	189	214

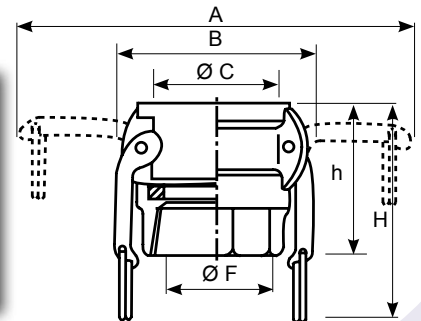
sizes are indicated in mm

On request, 1/2" x 3/4" are available (hose shrank 1/2", body 3/4").

**Quick “D” type CAM-LOCK fittings**

Body material:  
Aluminium  
Bronze  
Stainless Steel

EPDM, VITON, PTFE, NBR or SILICONE gaskets.



SIZE	inches	1/2"	3/4"	1"	1"1/4	1"1/2	2"	2"1/2	3"	4"	5"	6"
	mm	15	20	25	32	40	50	65	80	100	125	150
A		116	116	125	177	188	197	210	248	280	306	595
B		50	50	60	80	89	97	110	135	165	190	254
C		32	32	37	46	53	63	76	92	120	146	176
F		16	22	26	35	38	50	61	75	94	117	142
h		32	32	42	50	51	55	56	61	62	65	70
H		51	51	62	71	71	75	86	89	95	100	115

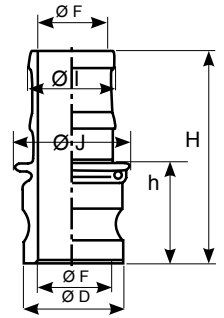
sizes are indicated in mm

On request, 1/2" x 3/4" are available (thread 1/2", body 3/4").



**Quick “E” type CAM-LOCK fittings**

Body material:  
Aluminium  
Bronze  
Stainless Steel



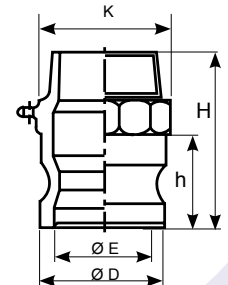
SIZES	inches	1/2"	3/4"	1"	1"1/4	1"1/2	2"	2"1/2	3"	4"	5"	6"
	mm	15	20	25	32	40	50	65	80	100	125	150
D		-	32	37	45	53	63	76	92	120	146	176
E		-	19	24	29	37	46	55	73	98	122	148
F		-	14	20	25	31	43	55	67	92	117	142
I		-	21	27	34	40	53	67	79	105	134	158
J		-	33	39	48	56	66	80	102	133	158	183
h		-	41	47	55	57	60	67	67	70	73	78
H		-	92	106	113	117	130	146	168	178	200	220

sizes are indicated in mm

On request, 1/2" x 3/4" are available (hose shrank 1/2", body 3/4").

**Quick “F” type CAM-LOCK fittings**

Body material:  
Aluminium  
Bronze  
Stainless Steel



EPDM;VITON; PTFE; NBR; or SILICONE gaskets.

SIZES	inches	1/2"	3/4"	1"	1"1/4	1"1/2	2"	2"1/2	3"	4"	5"	6"
	mm	15	20	25	32	40	50	65	80	100	125	150
D		32	32	37	45	53	63	76	92	120	146	186
E		14	19	24	29	37	46	55	73	98	122	148
K		32	38	41	51	57	71	84	100	129	168	192
h		26	26	32	41	42	48	50	50	53	55	60
H		55	55	65	76	79	86	97	100	114	117	129

sizes are indicated in mm

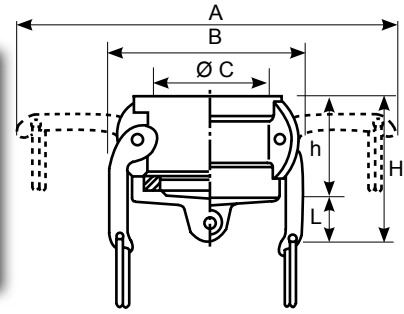
On request, 1/2" x 3/4" are available (thread 1/2", body 3/4").

**HOSE FITTINGS**

**Quick “DC” type CAM-LOCK fittings**

Body material:  
Aluminium  
Bronze  
Stainless Steel

EPDM;VITON; PTFE; NBR; or SILICONE gaskets.

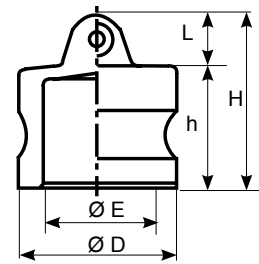


SIZES	inches	1/2"	3/4"	1"	1"1/4	1"1/2	2"	2"1/2	3"	4"	5"	6"
	mm	15	20	25	32	40	50	65	80	100	125	150
A		-	116	125	177	188	197	210	248	280	306	595
B		-	50	60	80	89	97	110	135	165	190	254
C		-	32	37	46	53	63	76	92	120	146	176
L		-	13	15	16	18	18	20	20	20	20	20
h		-	32	41	51	51	57	60	60	62	65	70
H		-	45	56	67	69	75	80	80	82	85	90

sizes are indicated in mm

**Quick “DP” type CAM-LOCK fittings**

Body material:  
Aluminium  
Bronze  
Stainless Steel



SIZES	inches	1/2"	3/4"	1"	1"1/4	1"1/2	2"	2"1/2	3"	4"	5"	6"
	mm	15	20	25	32	40	50	65	80	100	125	150
D		-	32	37	45	53	63	76	92	120	146	176
E		-	19	24	29	37	46	55	73	98	122	148
L		-	13	15	16	18	20	20	20	20	25	25
h		-	27	33	42	43	49	51	51	54	54	60
H		-	40	48	58	61	69	71	74	79	79	85

sizes are indicated in mm

**EPDM, VITON, PTFE, NBR or SILICONE spare gaskets.**

**Available sizes: 1/2" - 3/4" - 1" - 1"1/4 - 1"1/2 - 2" - 2"1/2 - 3" - 4"**



Fig. 1 – 90° M-F curve

Dim.	1/4"
	3/8"
	1/2"
	3/4"
	1"
	1"1/4
	1"1/2
	2"
	2"1/2
	3"
	4"



Fig. 41 - 45° F-F curve

Dim.	1/4"
	3/8"
	1/2"
	3/4"
	1"
	1"1/4
	1"1/2
	2"
	2"1/2
	3"
	4"



Fig. 2 - 90° F-F curve

Dim.	1/4"
	3/8"
	1/2"
	3/4"
	1"
	1"1/4
	1"1/2
	2"
	2"1/2
	3"
	4"



Fig. 90 – 90° F-F elbow

Dim.	1/4"
	3/8"
	1/2"
	3/4"
	1"
	1"1/4
	1"1/2
	2"
	2"1/2
	3"
	4"



Fig. 40 - 45° M-F curve

Dim.	1/4"
	3/8"
	1/2"
	3/4"
	1"
	1"1/4
	1"1/2
	2"
	2"1/2
	3"
	4



Fig. 92 – 90° M-F elbow

Dim.	1/4"
	3/8"
	1/2"
	3/4"
	1"
	1"1/4
	1"1/2
	2"
	2"1/2
	3"
	4"



HOSE FITTINGS

Fig. 130 – 90° F-F-F Tee

Dim.	1/4"
	3/8"
	1/2"
	3/4"
	1"
	1"1/4
	1"1/2
	2"
	2"1/2
	3"
	4"



Fig. 280 – Double nipple

Dim.	1/4"
	3/8"
	1/2"
	3/4"
	1"
	1"1/4
	1"1/2
	2"
	2"1/2
	3"
	4"



Fig. 180 – 90° cross

Dim.	1/4"
	3/8"
	1/2"
	3/4"
	1"
	1"1/4
	1"1/2
	2"
	2"1/2
	3"
	4"



Fig. 290 – Rimmed male screw tap

Dim.	1/4"
	3/8"
	1/2"
	3/4"
	1"
	1"1/4
	1"1/2
	2"
	2"1/2
	3"
	4"



Fig. 270 – Coupling

Dim.	1/4"
	3/8"
	1/2"
	3/4"
	1"
	1"1/4
	1"1/2
	2"
	2"1/2
	3"
	4"



Fig. 340 – F-F filler with conical seat

Dim.	1/4"
	3/8"
	1/2"
	3/4"
	1"
	1"1/4
	1"1/2
	2"
	2"1/2
	3"
	4"



Fig. 90 r – F-F reduced 90° elbow

Dim.	1/2" x 1/4"
	1/2" x 3/8"
	3/4" x 3/8"
	3/4" x 1/2"
	1" x 1/2"
	1" x 3/4"
	1"1/4 x 1/2"
	1"1/4 x 3/4"
	1"1/4 x 1"
	1"1/2 x 1"
	1"1/2 x 1"1/4
	2" x 1"
	2" x 1"1/4
	2" x 1"1/2



Fig. 341 – M-F filler with conical seat

Dim.	1/4"
	3/8"
	1/2"
	3/4"
	1"
	1"1/4
	1"1/2
	2"
	2"1/2
	3"
	4"



Fig. 240 – F-F reducing socket

Dim.	1/2" x 1/4"
	1/2" x 3/8"
	3/4" x 3/8"
	3/4" x 1/2"
	1" x 3/8"
	1" x 1/2"
	1" x 3/4"
	1"1/4 x 1/2"
	1"1/4 x 3/4"
	1"1/4 x 1"
	1"1/2 x 1/2"
	1"1/2 x 3/4"
	1"1/2 x 1"
	1"1/2 x 1"1/4
	2" x 3/4"
	2" x 1"
	2" x 1"1/4
	2" x 1"1/2





Fig. 241 –M-F reduction

Dim.	
3/8" x 1/4"	
1/2" x 1/4"	
1/2" x 3/8"	
3/4" x 1/4"	
3/4" x 3/8"	
3/4" x 1/2"	
1" x 1/4"	
1" x 3/8"	
1" x 1/2"	
1" x 3/4"	
1"1/4 x 3/8"	
1"1/4 x 1/2"	
1"1/4 x 3/4"	
1"1/4 x 1"	
1"1/2 x 1/2"	
1"1/2 x 3/4"	
1"1/2 x 1"	
1"1/2 x 1"1/4	
2" x 1/2"	
2" x 3/4"	
2" x 1"	
2" x 1"1/4	
2" x 1"1/2	
2"1/2 x 1"	
2"1/2 x 1"1/4	
2"1/2 x 1"1/2	
2"1/2 x 2"	
3" x 1"	
3" x 1"1/4	
3" x 1"1/2	
3" x 2"	
3" x 2"1/2	
4" x 1"	
4" x 1"1/4	
4" x 1"1/2	
4" x 2"	
4" x 2"1/2	
4" x 3"	



Fig. 245 – Reduced nipple

Dim.	
1/2" x 3/8"	
3/4" x 3/8"	
3/4" x 1/2"	
1" x 1/2"	
1" x 3/4"	
1"1/4 x 1/2"	
1"1/4 x 3/4"	
1"1/4 x 1"	
1"1/2 x 3/4"	
1"1/2 x 1"	
1"1/2 x 1"1/4	
2" x 1"	
2" x 1"1/4	
2" x 1"1/2	
2"1/2 x 1"1/2	
2"1/2 x 2"	



Fig. 246 – M-F reducing socket

Dim.	
1/2" x 1/4"	
1/2" x 3/8"	
3/4" x 3/8"	
3/4" x 1/2"	
1" x 1/2"	
1" x 3/4"	
1"1/4 x 1/2"	
1"1/4 x 3/4"	
1"1/4 x 1"	
1"1/2 x 3/4"	
1"1/2 x 1"	
1"1/2 x 1"1/4	
2" x 1"	
2" x 1"1/4	
2" x 1"1/2	





Fig. 90 – Aisi 316 F-F elbow

Dim.	
1/8"	
1/4"	
3/8"	
1/2"	
3/4"	
1"	
1"1/4	
1"1/2	
2"	
2"1/2	
3"	



Fig. 280 – Aisi 316 nipple

Dim.	
1/8"	
1/4"	
3/8"	
1/2"	
3/4"	
1"	
1"1/4	
1"1/2	
2"	
2"1/2	
3"	



Fig. 92 – Aisi 316 M-F elbow

Dim.	
1/8"	
1/4"	
3/8"	
1/2"	
3/4"	
1"	
1"1/4	
1"1/2	
2"	
2"1/2	
3"	



Fig. 340 – Aisi 316 straight FF conical filler

Dim.	
1/8"	
1/4"	
3/8"	
1/2"	
3/4"	
1"	
1"1/4	
1"1/2	
2"	
2"1/2	
3"	



Fig. 130 – Aisi 316 F-F-F Tee

Dim.	
1/8"	
1/4"	
3/8"	
1/2"	
3/4"	
1"	
1"1/4	
1"1/2	
2"	
2"1/2	
3"	



Fig. 341 – Aisi 316 straight MF conical filler

Dim.	
1/8"	
1/4"	
3/8"	
1/2"	
3/4"	
1"	
1"1/4	
1"1/2	
2"	
2"1/2	
3"	





Fig. 241 – Aisi 316 M-F reduction

Dim.	
1/4" x 1/8"	
3/8" x 1/8"	
3/8" x 1/4"	
1/2" x 1/8"	
1/2" x 1/4"	
1/2" x 3/8"	
3/4" x 1/4"	
3/4" x 3/8"	
3/4" x 1/2"	
1" x 1/2"	
1" x 3/4"	
1"1/4 x 1/2"	
1"1/4 x 3/4"	
1"1/4 x 1"	
1"1/2 x 3/4"	
1"1/2 x 1"	
1"1/2 x 1"1/4"	
2" x 1"	
2" x 1"1/4"	
2" x 1"1/2"	
2"1/2 x 1"1/2"	
2"1/2 x 2"	
3" x 2"	
3" x 2"1/2"	



Aisi 316 male hose shrank

Dim.	
1/4"	
3/8"	
1/2"	
3/4"	
1"	
1"1/4"	
1"1/2"	
2"	
2"1/2"	



Fig. 245 – Aisi 316 reduced nipple

Dim.	
1/4" x 1/8"	
3/8" x 1/4"	
1/2" x 1/8"	
1/2" x 1/4"	
1/2" x 3/8"	
3/4" x 1/4"	
3/4" x 1/2"	
1" x 1/2"	
1" x 3/4"	
1"1/4 x 1"	
1"1/2 x 1"	
1"1/2 x 1"1/4"	
2" x 1"	
2" x 1"1/4"	
2" x 1"1/2"	



**Fig. 90 – Brass 90° F-F elbow**

Dim.	1/2"
	3/4"
	1"
	1"1/4
	1"1/2
	2"
	2"1/2
	3"
4"	



**Fig. 280 – Brass double nipple**

Dim.	1/2"
	3/4"
	1"
	1"1/4
	1"1/2
	2"
	2"1/2
	3"
4"	



**Fig. 92 – Brass 90° M-F elbow**

Dim.	1/2"
	3/4"
	1"
	1"1/4
	1"1/2
	2"
	2"1/2
	3"
4"	



**Fig. 290 – Rimmed brass male screw-tap**

Dim.	1/2"
	3/4"
	1"
	1"1/4
	1"1/2
	2"



**Fig. 130 –90° F-F-F Tee**

Dim.	1/2"
	3/4"
	1"
	1"1/4
	1"1/2
	2"
	2"1/2
	3"
4"	



**Fig. 340 – F-F filler with conical seat**

Dim.	1/2"
	3/4"
	1"
	1"1/4
	1"1/2
	2"



**Fig. 270 – Brass sleeve**

Dim.	1/2"
	3/4"
	1"
	1"1/4
	1"1/2
	2"



**Fig. 341 – M-F filler with conical seat**

Dim.	1/2"
	3/4"
	1"
	1"1/4
	1"1/2
	2"



**Fig. 90 r – 90° F-F reduced elbow**

Dim.	3/4" x 1/2"
	1" x 1/2"
	1" x 3/4"



**Fig. 240 – F-F reducing socket**

Dim.	1/2" x 3/8"
	3/4" x 1/2"
	1" x 1/2"
	1" x 3/4"
	1"1/4 x 1"
	1"1/2 x 1"
	1"1/2 x 1"1/4
	2" x 1"1/4
	2" x 1"1/2



**Fig. 245 – Reduced nipple**

Dim.	1/2" x 3/8"
	3/4" x 1/2"
	1" x 1/2"
	1" x 3/4"
	1"1/4 x 1"
	1"1/2 x 1"
	1"1/2 x 1"1/4
	2" x 1"1/4
	2" x 1"1/4



**Fig. 241 – M-F reduction**

Dim.	1/2" x 1/4"
	1/2" x 3/8"
	3/4" x 1/2"
	1" x 1/2"
	1" x 3/4"
	1"1/4 x 1/2"
	1"1/4 x 3/4"
	1"1/4 x 1"
	1"1/2 x 3/4"
	1"1/2 x 1"
	1"1/2 x 1"1/4
	2" x 1"
	2" x 1"1/4
	2" x 1"1/2



**Brass male hose shrank**

Dim.	15 x 3/8"
	15 x 1/2"
	20 x 1/2"
	20 x 3/4"
	25 x 3/4"
	25 x 1"
	30 x 1"
	30 x 1" 1/4
	35 x 1" 1/4
	40 x 1" 1/4
	40 x 1" 1/2
	50 x 2"



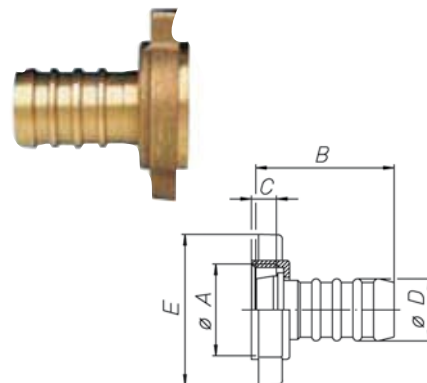
**Brass female hose shrank**

Dim.	13 x 1/4"
	15 x 3/8"
	15 x 1/2"
	20 x 3/4"
	25 x 3/4"
	30 x 1"
	35 x 1" 1/4
	40 x 1" 1/2
	50 x 2"



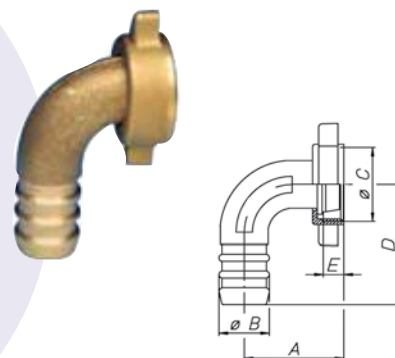
**Male half fitting with small ring**

DIM.	13	15	20	25	30	35	40	50
øA	1/2"	3/4"	7/8"	37,5X8	41,5X8	46,7X8	52X8	66,6X8
B mm	35	42	47	52	63	67	74	80
C mm	6,2	8,2	9,7	10,4	11,9	12,9	13,9	14,9
øD mm	14	16	21	25	31	36	41	51
E mm	34	45	51	60	67	74	82	100



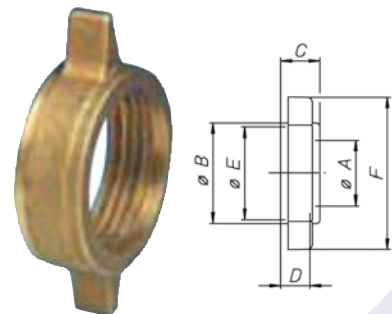
**Curve with small ring**

DIM.	20	25	30	35	40	50
A mm	40	47	52	60	66	76
øB mm	21	26	31	36	41	51
øC	7/8"	37,5x8	41,5x8	46,7x8	52x8	66,6x8
D mm	50	55	67	72	87	101,5
E mm	9,5	10,5	10,5	12	13	13



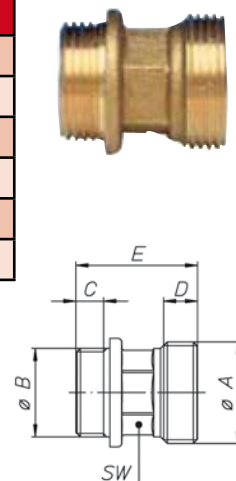
**Small ring for fittings**

DIM.	15	20	25	30	35	40	50
øA mm	16,5	22	30	34,5	39,5	44,5	53
øB mm	29	33,5	41	45	50,5	56	72
C mm	12	13	16	17,5	19	20	21
D mm	8,2	9,7	10,4	11,9	12,9	13,9	14,9
øE	3/4"	7/8"	37,5x8	41,5x8	46,7x8	52x8	66,6x8
F mm	45	51	60	67	74	82	100



**Big screw for pumps**

DIM.	3/8"x13	1/2"x15	3/4"x20	3/4"x25	1"x25	1"x30	1"1/4x30	1"1/4x35	1"1/2x40	2"x50
øA	1/2"	3/4"	7/8"	37,5x8	37,5x8	41,5x8	41,5x8	46,7x8	52x8	66,6x8
øB	3/8"	1/2"	3/4"	3/4"	1"	1"	1"1/4	1"1/4	1"1/2	2"
C mm	6,2	7,2	8,2	8,2	9,7	9,7	10,7	10,7	11,7	13,2
D mm	8	8	9	9	9	10	10	11	11	12
E mm	29,5	28	36	38,5	41	44	45,5	46,5	50	56
SW mm	14,5	18,5	22	27	27	30,5	30,5	35	39	56



**HOSE FITTINGS**

HOSE-GRASPING CLAMPS		
Description	9 mm clamp	12 mm clamp
HOSE-GRASPING CLAMPS 07 - 14	•	
HOSE-GRASPING CLAMPS 08 - 14	•	
HOSE-GRASPING CLAMPS 08 - 16	•	
HOSE-GRASPING CLAMPS 10 - 17	•	
HOSE-GRASPING CLAMPS 12 - 20	•	
HOSE-GRASPING CLAMPS 15 - 25	•	•
HOSE-GRASPING CLAMPS 16 - 24	•	
HOSE-GRASPING CLAMPS 19 - 28	•	•
HOSE-GRASPING CLAMPS 20 - 32	•	•
HOSE-GRASPING CLAMPS 25 - 40	•	•
HOSE-GRASPING CLAMPS 25 - 45	•	•
HOSE-GRASPING CLAMPS 32 - 50	•	•
HOSE-GRASPING CLAMPS 40 - 60	•	•
HOSE-GRASPING CLAMPS 50 - 70	•	•
HOSE-GRASPING CLAMPS 58 - 75	•	•
HOSE-GRASPING CLAMPS 60 - 80	•	•
HOSE-GRASPING CLAMPS 70 - 90	•	•
HOSE-GRASPING CLAMPS 80 - 100	•	•
HOSE-GRASPING CLAMPS 90 - 110	•	•
HOSE-GRASPING CLAMPS 100 - 120	•	•
HOSE-GRASPING CLAMPS 110 - 130	•	•
HOSE-GRASPING CLAMPS 120 - 140	•	•
HOSE-GRASPING CLAMPS 130 - 150		•
HOSE-GRASPING CLAMPS 135 - 165		•
HOSE-GRASPING CLAMPS 140 - 160	•	•
HOSE-GRASPING CLAMPS 160 - 180		•
HOSE-GRASPING CLAMPS 175 - 205		•
HOSE-GRASPING CLAMPS 200 - 220		•
HOSE-GRASPING CLAMPS 205 - 232		•
HOSE-GRASPING CLAMPS 220 - 240		•
HOSE-GRASPING CLAMPS 240 - 260		•
HOSE-GRASPING CLAMPS 250 - 280		•
HOSE-GRASPING CLAMPS 280 - 300		•
HOSE-GRASPING CLAMPS 300 - 320		•
HOSE-GRASPING CLAMPS 310 - 340		•
HOSE-GRASPING CLAMPS 330 - 360		•
HOSE-GRASPING CLAMPS 350 - 380		•
HOSE-GRASPING CLAMPS 370 - 400		•



Available also in AISI304 stainless steel.





**HOSE-GRASPING COLLARS**

**Description**

HOSE-GRASPING COLLARS W1 17 - 19 / 18 M5
HOSE-GRASPING COLLARS W1 20 - 22 / 18 M5
HOSE-GRASPING COLLARS W1 23 - 25 / 20 M6
HOSE-GRASPING COLLARS W1 26 - 28 / 20 M6
HOSE-GRASPING COLLARS W1 29 - 31 / 20 M6
HOSE-GRASPING COLLARS W1 32 - 35 / 20 M6
HOSE-GRASPING COLLARS W1 36 - 39 / 20 M6
HOSE-GRASPING COLLARS W1 40 - 43 / 20 M6
HOSE-GRASPING COLLARS W1 44 - 47 / 20 M6
HOSE-GRASPING COLLARS W1 48 - 51 / 20 M6
HOSE-GRASPING COLLARS W1 52 - 55 / 20 M6
HOSE-GRASPING COLLARS W1 56 - 59 / 20 M6
HOSE-GRASPING COLLARS W1 60 - 63 / 20 M6
HOSE-GRASPING COLLARS W1 64 - 67 / 25 M8
HOSE-GRASPING COLLARS W1 68 - 73 / 25 M8
HOSE-GRASPING COLLARS W1 74 - 79 / 25 M8
HOSE-GRASPING COLLARS W1 80 - 85 / 25 M8
HOSE-GRASPING COLLARS W1 86 - 91 / 25 M8
HOSE-GRASPING COLLARS W1 92 - 97 / 25 M8
HOSE-GRASPING COLLARS W1 98 - 103 / 25 M8
HOSE-GRASPING COLLARS W1 104 - 112 / 25 M8
HOSE-GRASPING COLLARS W1 113 - 121 / 25 M8
HOSE-GRASPING COLLARS W1 122 - 130 / 25 M8
HOSE-GRASPING COLLARS W1 131 - 139 / 25 M8
HOSE-GRASPING COLLARS W1 140 - 148 / 25 M8
HOSE-GRASPING COLLARS W1 149 - 161 / 25 M8
HOSE-GRASPING COLLARS W1 162 - 174 / 25 M8
HOSE-GRASPING COLLARS W1 175 - 187 / 30 M10
HOSE-GRASPING COLLARS W1 188 - 200 / 30 M10
HOSE-GRASPING COLLARS W1 201 - 213 / 30 M10
HOSE-GRASPING COLLARS W1 214 - 226 / 30 M10
HOSE-GRASPING COLLARS W1 227 - 239 / 30 M10
HOSE-GRASPING COLLARS W1 240 - 255 / 30 M10

Available also in AISI304 stainless steel.



Specifically designed for the clamping of hoses with a pronounced external spiral.

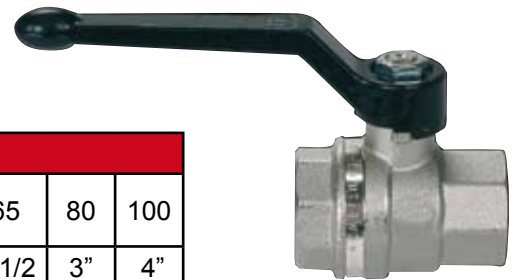
Made of zinced steel.

STAPLES FOR SPIRAL HOSES	
Description	
STAPLES 50 - 110	
STAPLES 50 - 130	
STAPLES 50 - 145	
STAPLES 50 - 165	
STAPLES 50 - 175	
STAPLES 50 - 215	
STAPLES 50 - 280	
STAPLES 50 - 325	
STAPLES 50 - 370	
STAPLES 50 - 425	
STAPLES 60 - 525	
STAPLES 70 - 625	
STAPLES 70 - 725	
STAPLES 70 - 825	
STAPLES 70 - 925	

**Nickel plated type:**

F-F made with aluminium lever

Produced sizes:											
Nominal diameter (mm)	8	10	15	20	25	32	40	50	65	80	100
Gas measure (inches)	1/4"	3/8"	1/2"	3/4"	1"	1 1/4"	1 1/2"	2"	2 1/2"	3"	4"



M-F made with aluminium lever

Produced sizes:									
Nominal diameter (mm)	8	10	15	20	25	32	40	50	65
Gas measure (inches)	1/4"	3/8"	1/2"	3/4"	1"	1 1/4"	1 1/2"	2"	2 1/2"



F-F made with aluminium butterfly

Produced sizes:					
Nominal diameter (mm)	8	10	15	20	25
Gas measure (inches)	1/4"	3/8"	1/2"	3/4"	1"



M-F made with aluminium butterfly

Produced sizes:					
Nominal diameter (mm)	8	10	15	20	25
Gas measure (inches)	1/4"	3/8"	1/2"	3/4"	1"

Mini-valve  
F-F made with trigger

Produced sizes:				
Gas measure (inches)	1/8"	1/4"	3/8"	1/2"



Made of Aisi 316 stainless steel  
F-F made with steel lever

Produced sizes:										
Nominal diameter (mm)	8	10	15	20	25	32	40	50	65	80
Gas measure (inches)	1/4"	3/8"	1/2"	3/4"	1"	1 1/4"	1 1/2"	2"	2 1/2"	3"



Code	Item	Description	Size
<b>Double version</b>			
Z300100	ART. F	D.A.	GAS BSP 3/8" DN 10
Z300200	ART. F	D.A.	GAS BSP 1/2" DN 15
Z300300	ART. F	D.A.	GAS BSP 3/4" DN 20
Z300400	ART. F	D.A.	GAS BSP 1" DN 25
Z300500	ART. F	D.A.	GAS BSP 1"1/4 DN 32
Z300600	ART. F	D.A.	GAS BSP 1"1/2 DN 40
Z300700	ART. F	D.A.	GAS BSP 2" DN 50
Z300800	ART. F	D.A.	GAS BSP 2"1/2 DN 65
Z300906	ART. F	D.A.	GAS BSP 3" DN 80
Z300950	ART. F	D.A.	GAS BSP 4" DN 100
<b>Simple version – normally closed</b>			
Z300101	ART. F	CLOSED	GAS BSP 3/8" DN 10
Z300201	ART. F	CLOSED	GAS BSP 1/2" DN 15
Z300301	ART. F	CLOSED	GAS BSP 3/4" DN 20
Z300401	ART. F	CLOSED	GAS BSP 1" DN 25
Z300501	ART. F	CLOSED	GAS BSP 1"1/4 DN 32
Z300601	ART. F	CLOSED	GAS BSP 1"1/2 DN 40
Z300701	ART. F	CLOSED	GAS BSP 2" DN 50
<b>Simple version – normally open</b>			
Z300102	ART. F	OPEN	GAS BSP 3/8" DN 10
Z300202	ART. F	OPEN	GAS BSP 1/2" DN 15
Z300302	ART. F	OPEN	GAS BSP 3/4" DN 20
Z300402	ART. F	OPEN	GAS BSP 1" DN 25
Z300502	ART. F	OPEN	GAS BSP 1"1/4 DN 32
Z300602	ART. F	OPEN	GAS BSP 1"1/2 DN 40
Z300702	ART. F	OPEN	GAS BSP 2" DN 50

**NICKEL-PLATED BRASS BALL VALVE**

Ball valve for the seizure of fluids without solid suspensions, characterized by total conveyance and small losses of load. The motion is activated by a rotative actuator, started by a pneumatic piston. Available in sizes between 3/8" and 4".



**ART. F**

Code	Item	Description	Size		
<b>Double version</b>					
Z900106	ART. AL	D.A.	BSP	3/8"	DN 10
Z900206	ART. AL	D.A.	BSP	1/2"	DN 15
Z900320	ART. AL	D.A.	BSP	3/4"	DN 20
Z900420	ART. AL	D.A.	BSP	1"	DN 25
Z900506	ART. AL	D.A.	BSP	1"1/4	DN 32
Z900600	ART. AL	D.A.	BSP	1"1/2	DN 40
Z900700	ART. AL	D.A.	BSP	2"	DN 50
Z900800	ART. AL	D.A.	BSP	2"1/2	DN 65
Z900900	ART. AL	D.A.	BSP	3"	DN 80
Z900950	ART. AL	D.A.	BSP	4"	DN 100
<b>Simple version – normally closed</b>					
Z900107	ART. AL	CLOSED	BSP	3/8"	DN 10
Z900207	ART. AL	CLOSED	BSP	1/2"	DN 15
Z900321	ART. AL	CLOSED	BSP	3/4"	DN 20
Z900421	ART. AL	CLOSED	BSP	1"	DN 25
Z900507	ART. AL	CLOSED	BSP	1"1/4	DN 32
Z900601	ART. AL	CLOSED	BSP	1"1/2	DN 40
Z900701	ART. AL	CLOSED	BSP	2"	DN 50
<b>Simple version – normally open</b>					
Z900108	ART. AL	OPEN	BSP	3/8"	DN 10
Z900208	ART. AL	OPEN	BSP	1/2"	DN 15
Z900322	ART. AL	OPEN	BSP	3/4"	DN 20
Z900422	ART. AL	OPEN	BSP	1"	DN 25
Z900508	ART. AL	OPEN	BSP	1"1/4	DN 32
Z900602	ART. AL	OPEN	BSP	1"1/2	DN 40
Z900702	ART. AL	OPEN	BSP	2"	DN 50

**STAINLESS STEEL BALL VALVES**

Ball valve for the interception of corrosive and alimentary fluids, lacking in solid suspensions. Total conveyance and small losses of load.

The motion is activated by a rotative actuator, started by a pneumatic piston.

Available in AISI 304 stainless steel or in AISI 316, both with PTFE gaskets.



**ART. AL**

### PLAITS

Plaits are the result of the plaiting of various yarns over a very compact central body, consisting of twisted and/or plaited threads. The plaits have stable sizes and are particularly accurate in every operation.

It is possible to apply two or more external plaits in order to increase mechanical resistance.

For specific uses, the plaits can be impregnated with graphite, PTFE or lubricants, rubberized or siliconized, wrapped up in a made to measure steel plait or net.

For dynamical uses, we recommend the various diagonally-plaited types.

Uses: gaskets for furnace doors, boilers, desiccators, ladles, stoves, chimneys and joints.

Gaskets for tunnel furnace wagons.

Range: round – square – rectangular section, from 3 to 100 mm.

### PLAITED CORDS

Plaited cords consist of a central body made of baked clay, silica and tech. glass fibre or strips, with an external wide or close-mesh plaiting of different threads. This makes them softer, lighter and subsequently less expensive than any related traditional plait. It is possible to apply two or more external plaits, in order to increase mechanical resistance.

Uses: heat insulation and protection of plants and hoses from heat; gaskets for furnace doors and boilers; gaskets for tunnel furnace wagons.

Range: wide-mesh in round sections and close-mesh in round, square and rectangular sections, from 12 to 100 mm.





Technical characteristics:

This highly versatile and long-lasting product has been specifically designed for use in environments requiring particular characteristics of resistance, due both to varying conditions and in case of exposure to chemical agents or extreme temperatures.

This unique product has all the superficial features of PTFE (polytetrafluorine-ethylene) and the mechanical characteristics of fibre glass fabric substratum, presenting its same dimensional stability, sturdiness and resistance to abrasion.

The properties of detachment belonging PTFE/Glass are the same as or higher than those of any other product on the market, for which the same properties are required.

The PTFE covering guarantees an incomparable lubricant capacity, with a low friction coefficient; for instance, it has been confirmed that the product can be used as a very effective separation sheet in the cooking/baking industry.



	Normal	Adhesive
Thickness (mm)	0,127	0,127 + 0,05
Standard height (mm)	1000 - 2000	1000
Weight (gr/mq)	230	230 (+ades.)
Resistance to traction (N/cm) (Warp/Weft)	230 / 200	230 / 200
Thermal resistance (°C)	-54 / +260	-54 / +200
Thickness (mm)	0,152	0,152 + 0,05
Standard height (mm)	1000	1000
Weight (gr/mq)	290	290 (+ades.)
Resistance to traction (N/cm) (Warp/Weft)	230/200	230/200
Thermal resistance (°C)	-54 / +260	-54 / +200

On request, also the 0,076-0,254 mm thick (or more) sizes are available.

On request, the antistatic version is also available.

Properties:

- It can substitute sockets in amiantus, rubber, etc.
- It guarantees a perfect seal on flanges and metal, glass, plastic and ceramic tanks.
- It has a high chemical compatibility
- It doesn't deteriorate in time.
- It has no odour nor flavour, up to a temperature of +270°C.
- It guarantees a perfect seal at high temperatures and a remarkable thermal stability.
- It is resistant to corrosive acids and suitable for sealing in presence of chemical products, hydrocarbons, acids and steam.
- It is soft and flexible, guaranteeing a perfect seal on rough and irregular surfaces.
- It is available with adhesive strip, in order to make assembly operations easier.
- This product will enable you to reduce installation and maintainance costs.



TECHNICAL FEATURES:

Composition: non synthesized PTFE

Working temperatures: - 240°C to +315°C

STANDARD SIZES FOR NON SYNTHESIZED EXPANDED PTFE STRIPS AND ROUND SECTIONS

INCH.	WIDTH mm.	THICKNESS mm.	ROUND Ø mm.	ROLL LENGTH (mt.)	
1/8"	3 x 1,5		3	25	50
3/16"	5 x 2		5	25	50
1/4"	7 x 2,5		7	15	25
3/8"	10 x 3		10	10	25
1/2"	12 x 4		12	10	25
9/16"	14 x 5		14	10	25
5/8"	17 x 6		16	5	10
3/4"	20 x 7		---	5	10
	20 x 10			5	10
	20 x 12			5	10
	25 x 5			5	10
	25 x 7			5	10
	25 x 8			5	10
	25 x 10			5	10
	30 x 10			5	10
	40 x 5			5	10

On request, available also in the graphite-plated version.



Silicone foam section, adhesive on one side.  
Available in the following sizes:

30x3  
18x3



TECHNICAL FEATURES	
Density (Kg/m3)	280/300 (on request, 400-500-600)
Resistance to heat	-60° + 200°C
Thermal conductivity	K=64x10 W/M/K (0,23 Kjm hr K)
Porosity	/
Resistance to breaking	15-20 11/cm2
Extensibility	207%
Resistance to compression	On request
Colour	Red (neutral on request)
Peculiar features and finishings	Products made without CFC Temperatures (60°C + 200°C)

**EXPANDED SILICONE SECTIONS**

Expanded silicone has an optimal resistance to weather and ageing phenomenons, excellent electric properties and a very good thermal insulation.  
NON ALIMENTARY.



	FLAT	ROUND
<b>SIZE</b>	sez. 8x5 ÷ 40x12 mm	Ø 3 ÷ Ø 20 mm
<b>COLOUR</b>	white	paleyellow
<b>DENSITY</b>	0,5	0,4 ÷ 0,5
<b>% OF WATER ABSORPTION RELATED TO VOLUME</b>	< 1	< 1
<b>WORKING TEMPERATURE</b>	-50 ÷ +200 °C	-60 ÷ +200 °C
<b>EXTENSIBILITY</b>	> 200 %	-
<b>COMPRESSION</b>	15%	20%
<b>THERMAL COEFFICIENT OF CONDUCTIVITY</b>	0,07 W	0,075 W
<b>SHORE A HARDNESS</b>	8 ÷ 15	8 ÷ 15
<b>RESISTANCE TO:</b>		
<b>DILUTED ACIDS</b>	Good	Good
<b>CONCENTRATED ACIDS (EXCEPT FOR NITRIC ACID)</b>	Ordinary	Ordinary
<b>ALKALINE SUBSTANCES</b>	Good	Good
<b>PETROL AND MINERAL OILS</b>	Slight variation	Slight variation
<b>AROMATIC SOLVENTS</b>	Weak	Weak
<b>CHLORINATED SOLVENTS</b>	Weak	Weak
<b>OZONE AND WEATHER PHENOMENONS</b>	Excellent	Excellent

SEALS



Reels (25 mt)	
Diameter (mm)	Weight (gr/mt)
2	4
2,5	6
3	8
4	15
5	24
6	34
7	46
8	60
9	80
10	95
11	115
12	140
13	160
14	185
15	215
16	245
18	310
20	380
25	590
26	640
30	850
35	1.155
40	1.510

Silicone has an excellent resistance not only to acids and bases, but also to oxidation and ageing.

Being photosensitive, it assumes a yellowy colour when exposed to sunlight, but maintains unaltered mechanical properties.

Its resistance to petrol, aromatic and chlorinated solvents is average, whereas it can be considered weak for solvents in general.

Its permanent deformation is exceptionally low.

**WORKING TEMPERATURES:**

Between  $-50^{\circ}\text{C}$  and  $+200^{\circ}\text{C}$ , with peaks up to  $+250^{\circ}\text{C}$

**HARDNESS:**

60° +/- Shore A

**SPECIFIC GRAVITY**

1,2 gr/cm

**COLOUR:**

Neutral (red is also available, on demand)



**P.T.F.E ROLLS**

Non synthesized strips are entirely made of PTFE and are frequently used for their sealing properties over metal threads or in plastic materials. They resist to all chemical products and solvents, except for gaseous fluorine at high temperatures, chlorine tri-fluorine and fused or solute metals.

Working temperatures vary between  $-200^{\circ}\text{C}$  and  $+260^{\circ}\text{C}$ . The strips have no odour nor flavour, are insoluble and have a very low friction coefficient.



**INDUSTRIAL WHEELS**

- Cast iron + run polyurethane wheels
- Nylon + injection polyurethane wheels
- Sheet steel + black rubber ring wheels

Avilable also with the following reinforcement materials:

- sheet metal
- stainless steel
- cast iron
- fixed
- revolving
- with brakes



**SEALERS AND ADHESIVES**

Anaerobic, cyanacrylic, epoxy, silicone, poly-chloroprene, polyurethane types.  
Fats and industrial oils  
Adhesive tapes

We can also provide a vast range of sealing and adhesive products of the best makes, such as:

- Loctite
- Arexons
- Henkel
- And many others





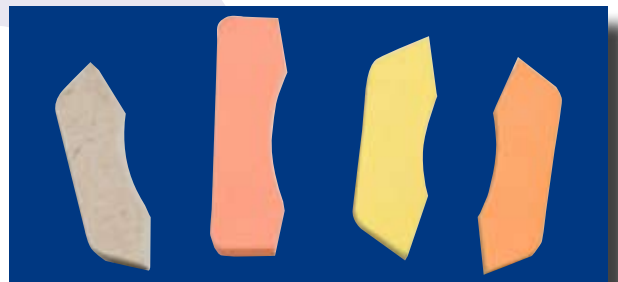
**HANDLE RANGE**

Fixing and positioning components  
Working components  
Clamping and regulation components

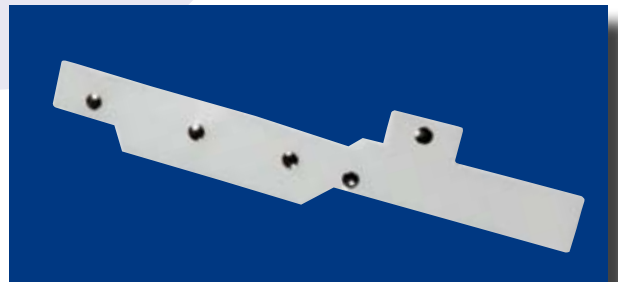


**SEAL ENDS**

We can provide specifically designed or up to sample seal ends, of the materials which you consider the most suitable for your needs.



**SPECIFICALLY DESIGNED MYLAR MUDGUARDS**



**SPARE BUTTONS FOR MYLAR MUDGUARDS**



**PTFE GLASS FABRIC MUDGUARDS**







**HOSES FOR PERISTALTIC PUMPS**

Materials:

- Rubber
- Silicone
- Norprene

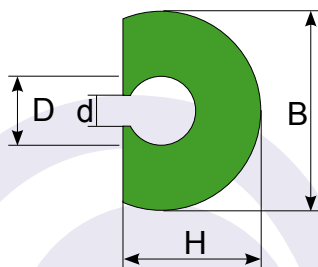
Size:

diam. 17x31 mm L= 590 mm



**POLYETHYLENE SIDE GUIDES**

Polyethylene side guides for the covering of round bars and sections



	Round bar covering D=8/10/12	Colour
Size	H=14/B=22/d=7,0	Black/green. Antistatic
Size	H=16/B=22/d=8,5	Black/green. Antistatic
Size	H=18/B=4/d=10	Black/green. Antistatic
Available length	2000 mm	

**SPECIFICALLY DESIGNED GASKETS**

Available in all materials which may suit your needs:

- Compact and expanded PTFE
- Any type of compact and expanded rubber
- Compact and expanded silicone
- Rubberized cork
- Amiantus free
- Felt
- Products suitable for high and very high temperatures
- Anti-solvent materials



**PTFE RINGS**

OR PTFE rings cut at a 45° angle, available in the following sizes:

- ext. diameter 100 mm x int. diameter 88 mm
- ext. diameter 126 mm x int. diameter 114 mm



**MAR1-CP CLIPPARD VALVES**



**PNEUMATIC VALVES**

Pneumatic valves for doctor blades



**SPECIFICALLY DESIGNED FITTED HOSES**

Hoses for the conveyance of solvents, already fitted according to your needs.

**Hose fittings:**

- with clamps
- with collars
- with half-shells
- with pressed bushings

**Fittings:**

- On demand



**FILTERING**

- Filtering cells
- Filtering cartridges and sleeves
- Rolls of filtering material





Textile expansion joints are made with fabrics presenting a high mechanical and thermal resistance.

They are specifically designed in order to guarantee a perfect sealing and an exceptional mechanical resistance in various operational conditions. Moreover, they can tolerate waste gasses and thermal expansions.

These expansion joints can be insulated internally by using ceramic felts or especially treated HT fibre glass fabrics. They are composed of layers of different materials, such as PTFE, thin plates or steel nets, silicone or aluminium insulations, according to the required uses and the client's needs.

The expansion joints are provided either open, in layered linear pieces with reinforced borders (made of the same fabric as the external layer) and with a specific joint made on demand; or closed, in any requested size and made on wooden templates.

Fibre Glass Expansion Joint

**H=160 mm W=50 mt**



**Expanded polyurethane safety sections**

Safety and signalling sections made of expanded black Polyurethane with yellow stripes, covered by a plastic waterproof film.

**Features:**

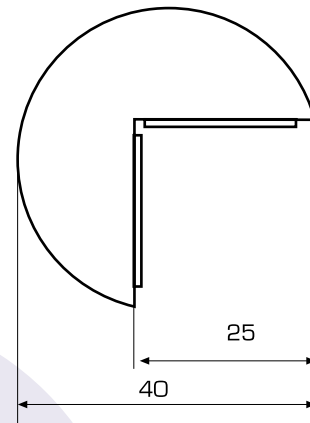
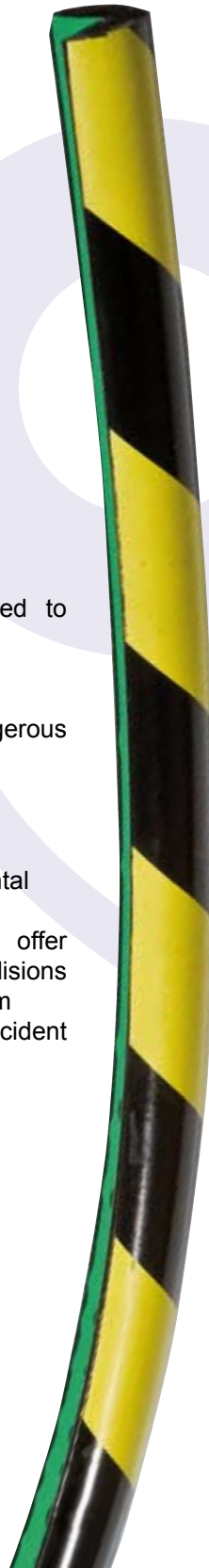
Material: Polyurethane foam

Length: 1500 mm

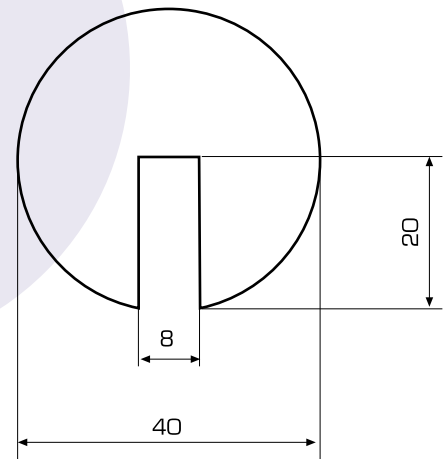
Sizes: A, B, C, as in the specifications

Working temperature: from  $-40^{\circ}\text{C}$  to  $+100^{\circ}\text{C}$

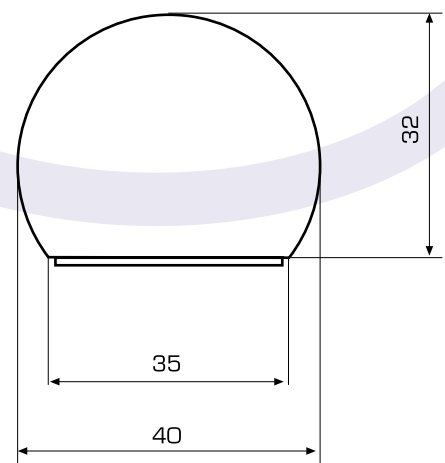
Made with or without adhesive



**A: corner safety section**



**B: edge safety section**



**C: surface safety section**

**A type**

Safety sections for corners and edges, applied to machines in order to prevent accidents.

**B type**

Safety sections applied to edges, in the most dangerous parts.

The corners are completely covered.

**C type**

Safety sections for surfaces. They prevent accidental impacts provoked by the movement of trucks.

The characteristics of expanded Polyurethane offer excellent solutions for the absorption of collisions and for the protection of the operators driving the machines, making these safety sections proper accident prevention products.

<b>Black SBR rubber sheet</b>	
Available in the 1500mm high version, with the following thickness sizes:	
1 – 2 – 3 – 4 – 5 – 6 – 8 – 10 mm	(W – 10 mt)
<b>Black SBR rubber single sheet.</b>	
Available in the 1500mm high version, with the following thickness sizes:	
1 – 2 – 3 – 4 – 5 mm	(W – 10 mt)
<b>Black SBR rubber double sheet.</b>	
Available in the 1500mm high version, with the following thickness sizes:	
5 – 6 – 8 – 10 mm	(W – 10 mt)
<b>Black NBR anti-oil rubber sheet.</b>	
Available in the 1500mm high version, with the following thickness sizes:	
1 – 2 – 3 – 4 – 5 – 6 – 8 – 10 mm	(W – 10 mt)
<b>Para rubber sheet</b>	
Available in the 1500mm high version, with the following thickness sizes:	
1 – 2 – 3 – 4 – 5 – 6 – 8 – 10 mm	(W – 10 mt)
<b>Silicone sheet</b>	
Available in the 1500mm high version, with the following thickness sizes:	
1-1,5-2-3 mm (W – 10 mt)	4-5-6 mm L = 5 mt

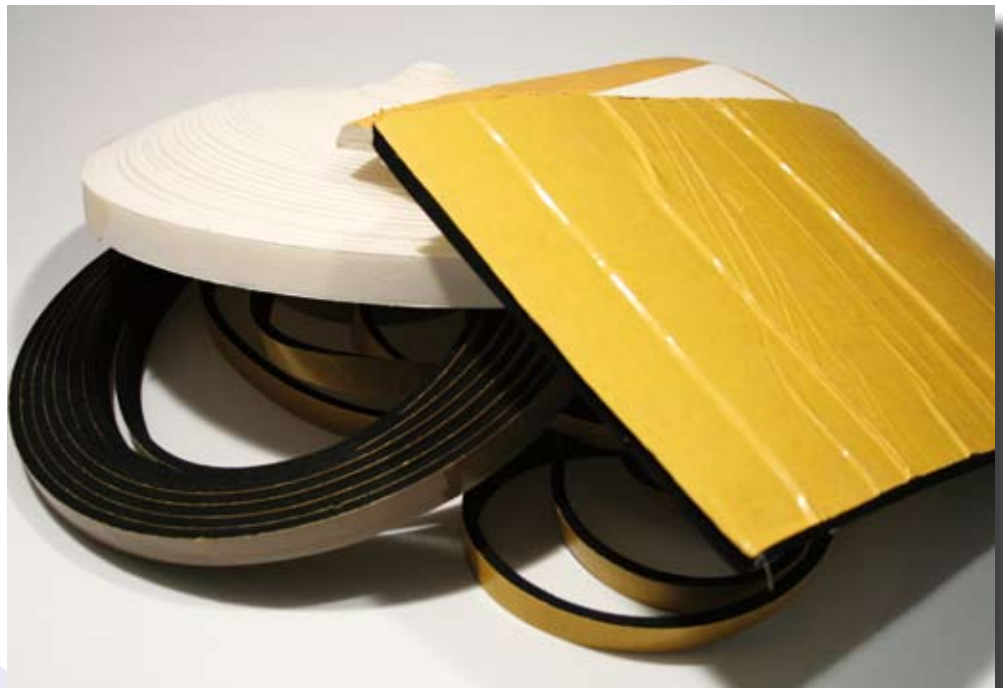


Material properties	Unit of measurement	Black sheet	Alimentary sheet	Anti-oil sheet	Para rubber sheet	Silicone sheet	Viton sheet
Hardness	ShA	70	60	72	40	60	75
Specific gravity	g/cm <sup>3</sup>	1,45	1,50	1,50	0,96	1,15	1,88
Max. tolerable load	mpa	3	9	8	20	8	7
Extensibility	%	3	400	350	550	350	300
Resistance to tearing	N/mm	15	22	30	40	15	20
Max. working temperature	°c	+70	+100	+100	+70	+180	+200
Min. working temperature	°c	-20	-20	-20	-35	-50	-10
Elasticity		S	B	B	00	B	-
Abrasion		S	S	S	B	S	S
Inflammability		S	S	S	S	B	00
Fuel		-	B	B	-	-	00
Weather phenomenons		-	S	S	S	00	00
Symbols:	Due to the difference between environmental operating conditions and test methods, the values in the present table must be considered as indications. The data reported in the summary are given without any guarantee and imply no responsibility at all on our behalf. The indicated weights are merely theoretical.						
OO - Excellent							
B – Good							
M - Mediocre							
S – Poor							
- Inadequate							





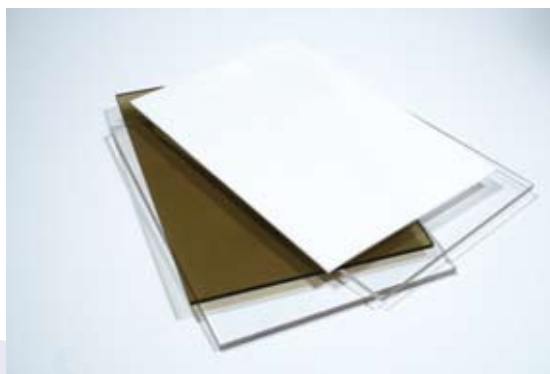
Manufactured sizes:
2x5
2x10
2x15
2x20
2x25
2x30
2x40
2x50
3x5
3x10
3x15
3x20
3x25
3x30
3x40
3x50
5x5
5x10
5x15
5x20
5x25
5x30
5x40
5x50
10x10
10x15
10x20
10x25
10x30
10x40
10x50
15x15
15x20
15x25
15x30
15x40
15x50
20x20
20x25
20x30
20x40
20x50



MATERIALES PROPERTIES	EPDM
Colour	BLACK
Density	120
Resistance to cold	B
Inflammability	S
Ageing due to exposure to the air	M
Ageing due to exposure to the sun	M
Ageing due to exposure to UV rays	B
Resistance to repeated compression	B
Resistance to solvents	S
Resistance to acids	B
Resistance to heat (C°)	80
<b>Symbols:</b> <b>OO - Excellent</b> <b>B - Good</b> <b>M - Mediocre</b> <b>S - Poor</b> <b>- Inadequate</b>	Due to the difference between environmental operating conditions and test methods, the values in the present table must be considered as indications. The data reported in the summary are given without any guarantee and imply no responsibility at all on our behalf. The indicated weights are merely theoretical



<b>Transparent compact polycarbonate sheets.</b>
Tamaños disponibles: 1250x2050-2050x3050mm
Manufactured thickness range: 1 – 2 – 3 – 4 – 5 – 6 – 8 – 10 mm
Opal, smoky grey and bronze coloured sheets, or sheets with protection against U.V. rays and solvents are also available on request.
<b>Transparent alveolate polycarbonate sheets.</b>
Available size: 2100x3000 mm
Manufactured thickness range: 4 – 6 – 8 – 10 - 16 mm



FEATURES	TEST METHOD	UNIT OF MEASUREMENT	VALUE
<b>Physical properties:</b>			
Density	DIN 53479	Kg/dm <sup>3</sup>	1,2
Light transmission (transparent sheet, 3mm thick)	DIN 5036	%	90
Index of refraction	DIN 53491		1,585
<b>Mechanical properties:</b>			
Resistance to tensile stress (yeld)	DIN 53455	N/mm <sup>2</sup>	>60
Resistance to tensile stress (breaking)	DIN 53455	N/mm <sup>2</sup>	>70
Elasticity module	DIN 53457	N/mm <sup>2</sup>	2300
	DIN 53453	kJ/m <sup>2</sup>	>30
<b>Thermal properties:</b>			
Expansivity			
Thermal conductivity		l/k	65 x 10
Deflection temperature (hot)	DIN 52612	W/mk	0,21
Max. continuous working temperature	DIN 53461	°C	135
Max. continuous working temperature		°C	100

**Due to the difference between environmental operating conditions and test methods, the values in the present table must be considered as indications.**  
**The data reported in the summary are given without any guarantee and imply no responsibility at all on our behalf.**  
**The indicated weights are merely theoretical.**



Wide range of semiprocessed plastic materials (sheets, round sections and sleeves)

- Polyethylene
- PA 6 (nylon)
- POM (acetalic resin)
- PET (arnite)
- PTFE
- PVC
- Polypropylene
- PETG
- Methacrylate





We are able to offer a vast supply of finished products on demand, specifically designed for all needs and for the following materials:

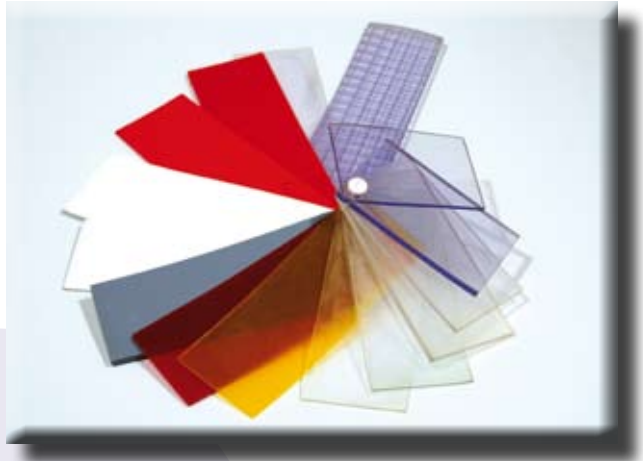
- compact polycarbonate
- alveolate polycarbonate
- polyethylene
- PVC
- Polypropylene
- Nylon
- PTFE
- And others on request

Manufacturing processes:

- cutting
- profiling
- manufacturing with control machines
- controlled milling
- piercing and incisions
- turning
- punch cutting
- bending



General properties:  
thermal and sound insulation, sealing (against water, gas, dust), mechanical resistance (to shock and tearing), resistance to most chemical products.



MATERIAL PROPERTIES	U.M.	FLEX	ANTIFREEZE
Density	Kg/dm <sup>3</sup>	1,22	1,19
Extensibility	%	400	440
Breaking temperature (cold)	°C	-30	-45
Non toxicity		SI	SI
Working temperature		-10 +50	-40 +50

**Due to the difference between environmental operating conditions and test methods, the values in the present table must be considered as indications.  
The data reported in the summary are given without any guarantee and imply no responsibility at all on our behalf.  
The indicated weights are merely theoretical.**



<b>FLEXIBLE TRANSPARENT PVC ROLLS</b>		
<b>Height: 1000 mm – 20 mt roll – Light blue</b>		U.M.
Light blue flex pvc sheet sp.1	1,30 Kg/mq	NR
Light blue flex pvc sheet sp.2	2,60 Kg/mq	NR
Light blue flex pvc sheet sp.3	3,90 Kg/mq	NR
Light blue flex pvc sheet sp.4	5,20 Kg/mq	NR
Light blue flex pvc sheet sp.5	6,50 Kg/mq	NR
<b>Height: 1200 mm – 20 mt roll – Light blue</b>		U.M.
Light blue flex pvc sheet sp.2	2,60 Kg/mq	NR
Light blue flex pvc sheet sp.3	3,90 Kg/mq	NR
Light blue flex pvc sheet sp.4	5,20 Kg/mq	NR
Light blue flex pvc sheet sp.5	6,50 Kg/mq	NR
<b>Height: 1500 mm – 20 mt roll – Light blue</b>		U.M.
Light blue flex pvc sheet sp.2	2,60 Kg/mq	NR
Light blue flex pvc sheet sp.3	3,90 Kg/mq	NR
Light blue flex pvc sheet sp.4	5,20 Kg/mq	NR
Light blue flex pvc sheet sp.5	6,50 Kg/mq	NR
<b>Height: 1000 mm – 20 mt roll – Neutral</b>		U.M.
Neutral flex pvc sheet sp.2	2,60 Kg/mq	NR
Neutral flex pvc sheet sp.3	3,90 Kg/mq	NR
Neutral flex pvc sheet sp.4	5,20 Kg/mq	NR
Neutral flex pvc sheet sp.5	6,50 Kg/mq	NR
<b>Height: 1200 mm – 20 mt roll – Neutral</b>		U.M.
Neutral flex pvc sheet sp.2	2,60 Kg/mq	NR
Neutral flex pvc sheet sp.3	3,90 Kg/mq	NR
Neutral flex pvc sheet sp.4	5,20 Kg/mq	NR
Neutral flex pvc sheet sp.5	6,50 Kg/mq	NR
<b>Height: 1500 mm – 20 mt roll – Neutral</b>		U.M.
Neutral flex pvc sheet sp.2	2,60 Kg/mq	NR
Neutral flex pvc sheet sp.3	3,90 Kg/mq	NR
Neutral flex pvc sheet sp.4	5,20 Kg/mq	NR
Neutral flex pvc sheet sp.5	6,50 Kg/mq	NR

<b>TRANSPARENT STRIPS</b>		
<b>50 mt rolls – Light blue</b>		U.M.
Light blue flex pvc sheet sp.2 H:200	0,49 kg/mt	NR
Light blue flex pvc sheet sp.3 H:300	1,10 kg/mt	NR
Light blue flex pvc sheet sp.3 H:400	1,47 kg/mt	NR
Light blue flex pvc sheet sp.4 H:400	1,95 kg/mt	NR
<b>50 mt rolls – Neutral</b>		U.M.
Neutral flex pvc sheet sp.2 H:200	0,49 kg/mt	NR
Neutral flex pvc sheet sp.3 H:300	1,10 kg/mt	NR
Neutral flex pvc sheet sp.3 H:400	1,47 kg/mt	NR
Neutral flex pvc sheet sp.4 H:400	1,95 kg/mt	NR
<b>50 mt rolls – Red</b>		U.M.
Red flex pvc sheet sp.2 H:200	0,49 kg/mt	NR
<b>ANTIFREEZE STRIPS</b>		
<b>50 mt rolls – Green</b>		U.M.
Antifreeze pvc sheet sp.2 H:200	0,49 kg/mt	NR
<b>50 mt rolls – Neutral</b>		U.M.
Antifreeze pvc sheet sp.2 H:200	0,49 kg/mt	NR
Antifreeze pvc sheet sp.3 H:300	1,10 kg/mt	NR
Antifreeze pvc sheet sp.4 H:400	1,95 kg/mt	NR

**RANGE OF PLASTIC MATERIALS**



Polyestere film with mechanical, dielectric and anti-solvent features.  
Packed in 1000 mm high reels.



Thickness (mm)	Dielectric insulation Kv.	Output m2 / Kg	Packaging
0,125	15,60	5,7	1000 mm high rolls
0,19	20	3,8	1000 mm high rolls
0,25	22,50	2,9	1000 mm high rolls
0,30	24,50	2,9	1000 mm high rolls
0,35	27	2,0	1000 mm high rolls



Globe stop valve, suitable for the interception of steam. It has a cast iron body, stainless steel shutters and internal components, PN16 sealing bellows, connections with flanges and hand-wheel controls.



**Size (mm) of the globe valve**

ND	15	20	25	32	40	50	65	80	100	125	150	200
Width	130	150	160	180	200	230	290	310	350	400	480	600
Height	217	219	230	233	258	260	353	358	380	391	469	582

Y-shaped steam filter, cast iron body, extractable stainless steel filter sheet, PN 16 connections with flanges.



**Size (mm) of the Y-shaped steam filter**

ND	15	20	25	32	40	50	65	80	100	125	150	200
Height	95	105	115	140	150	165	185	200	220	250	285	340

Conveyance indicator, with cast iron body, double borosilicate glazing, PN16 connections with flanges.



**Size (mm) of the conveyance indicator**

ND	15	20	25	32	40	50	65	80	100	125	150	200
Height	130	150	160	180	200	230	290	310	350	400	480	600

Thermodynamic condensate drainpipe, with carbonate steel body, extractable filter, incorporated air expeller and threaded gas connections.



**Size (mm) of the thermodynamic condensate drainpipe**

ND	1/2"	3/4"	1"
Gauge	78	85	95



Condensate ballcock, with spheroidal cast iron body, incorporated air expeller, and connections available both in the threaded gas version and UNI PN25 with flanges.

Size of the threaded version (mm)			
ND	1/2"	3/4"	1"
Gauge	121	121	145
Height	107	107	107



Size of the version with flanges (mm)			
ND	15	20	25
Gauge	150	150	160
Height	107	107	107

Mushroom check valve, with cast iron body, stainless steel internal components and PN16 connections with flanges.



Size (mm) of the mushroom check valve												
ND	15	20	25	32	40	50	65	80	100	125	150	200
Width	130	150	160	180	200	230	290	310	350	400	480	600

Disk check valve, with stainless steel body, stainless steel spring and plate, wafer PN 16/40 connections.



Size (mm) of the disk check valve												
ND	15	20	25	32	40	50	65	80	100	125	150	200
Width	16	19	22	28	31,5	40	46	50	60	90	106	140

Pneumatic valve with double entry, usually closed. It has a cast iron body, EQP shutter and stainless steel seat, graphite-plated PTFE bellow, PN16 connections with flanges, pneumatic actuator.





Globe stop valve for the interception of diathermic oil and superheated water, with spheroidal cast iron body, stainless steel shutter and internal components, PN16 sealing bellows, connections with flanges, hand-wheel controls.



Size (mm) of the globe valve

ND	15	20	25	32	40	50	65	80	100	125	150	200
Width	130	150	160	180	200	230	290	310	350	400	480	600
Height	217	219	230	233	258	260	353	358	380	391	469	582

Y-shaped filter for diathermic oil and superheated water, with spheroidal cast iron body, extractable stainless steel filter sheet, and PN16 connections with flanges.



Dimensiones(mm) Filtro a Y para aceite diatérmico.

ND	15	20	25	32	40	50	65	80	100	125	150	200
Width	95	105	115	140	150	165	185	200	220	250	285	340

Pneumatic valve with triple entry, suitable both for diversions and mixing processes. Spheroidal cast iron body, stainless steel LV shutter and internal components, PN16 sealing bellows.





Pneumatic positioner. Entry signal: 3-15/6-30 psi; exit signal: 0-30 psi. It can be fixed on double and triple entry adjusting valves.



Electro-pneumatic positioner. Entry signal: 4-20 mA / 0-10 Vdc; exit signal: 0-30 psi. It can be fixed on double and triple entry adjusting valves.



Electro-pneumatic converter. Entry signal: 4-20 mA / 0-10 Vdc; exit signal: 0-30 psi. It can be fixed both on DIN bars or on the plant itself.



Pneumatic temperature regulator. Measuring device: thermometric nitrogen charged system, proportional control, provided with air trap. Supply: 20 psi air.



Pneumatic pressure regulator. Measuring device: Bourdon spring gauge, proportional control. Supply: 20 psi air.



PT100 temperature feeler with triple thread, made of stainless steel and provided with air trap.



Digital regulator 4-20 mA, configurable entry (PT100, thermocouple, 4-20 mA), 3 relay alarms, PID algorithm, suitable for switchboard installation.

Liquid, steam and air gauge, made of steel. Measuring device: stainless steel Bourdon spring, available with cooling burr and stopcock.



Bimetallic or inert thermometer, made of steel, provided with air trap and available on request with capillary vessel and/or separator.



Air radiator for steam, with carbonate steel frame, copper/ stainless steel pipes, aluminium fins.  
Supply: 2-6 bar (g) steam.



Peristaltic pumps for the conveyance of aggressive fluids, specifically designed to fit the characteristics of the plant.



Battery for air heating, made of carbonate steel, carbonate steel/stainless steel pipes, aluminium fins.  
Supply: steam, superheated water, diathermic oil.



Stainless steel expansion vessel, presenting a membrane suitable for solvents and aggressive fluids.



Centrifugal pumps and circulatory devices for industrial fluids: water, superheated water and diathermic oil, specifically designed to fit the characteristics of the plant.

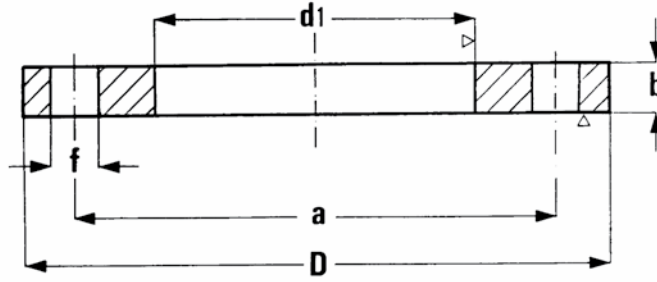


Reflecting and magnetic level indicator, personalized manufacturing with the possibility to install alarm or retransmission signals.



Thermoregulation and drainage units, provided with interception valves, adjusting valves and equipment. Manufactured with a carbonate steel pipe and deep weldings, these units have stainless reinforced graphite gaskets.





Flat flanges UNI EN 1092-1 PN10

DN	Ø TUBE	d1
	ISO	ISO
10	17,2	18
15	21,3	22
20	26,9	27,5
25	33,7	34,5
32	42,4	43,5
40	48,3	49,5
50	60,3	61,5
65	76,1	77,5
80	88,9	90,5
100	114,3	115,5
125	139,7	141,5
150	168,3	170,5
200	219,1	221,5
250	273	276,5
300	323,9	327,5
350	355,6	359,5
400	406,4	411
450	457,2	462
500	508	513,5
600	609,6	616,5
700	711,2	714,2
800	812,8	815,8
900	914,4	917,4
1000	1016,6	1019
1200	1220	1224
1400	1420	1424
1600	1620	1624
1800	1820	1824
2000	2020	2024

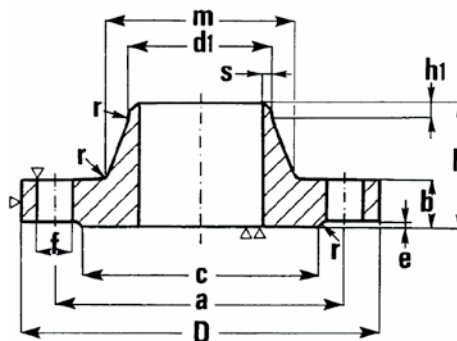
Flat flanges UNI EN 1092-1 PN16

DN	Ø TUBE	d1
	ISO	ISO
10	17,2	18
15	21,3	22
20	26,9	27,5
25	33,7	34,5
32	42,4	43,5
40	48,3	49,5
50	60,3	61,5
65	76,1	77,5
80	88,9	90,5
100	114,3	116,5
125	139,7	141,5
150	168,3	170,5
200	219,1	221,5
250	273	276,5
300	323,9	327,5
350	355,6	359,5
400	406,4	411
450	457,2	462
500	508	513,5
600	609,6	616,5
700	711,2	714,2
800	812,8	815,8
900	914,4	917,4
1000	1016,6	1019
1200	1220	1224
1400	1420	1424
1600	1620	1624
1800	1820	1824
2000	2020	2024

Flat flanges UNI EN 1092-1 PN25/PN40

DN	Ø TUBE	d1
	ISO	ISO
<b>UNI EN 1092 - 1 PN 25</b>		
FROM DN 10 TO DN 150 USE FLANGES PN 40 - UNI 6084 - 67		
200	219,1	221,5
250	273	276,5
300	323,9	327,5
350	355,6	359,5
400	406,4	411
450	457,2	462
500	508	513,5
600	609,6	616,5
<b>UNI EN 1092 - 1 PN 40</b>		
10	17,2	18
15	21,3	22
20	26,9	27,5
25	33,7	34,5
32	42,4	43,5
40	48,3	49,5
50	60,3	61,5
65	76,1	77,5
80	88,9	90,5
100	114,3	115,5
125	139,7	141,5
150	168,3	170,5
200	219,1	221,5
250	273	276,5
300	323,9	327,5
350	355,6	359,5
400	406,4	411
450	457,2	462
500	508	513,5
600	609,6	616,5

DIMENSIONAL TABLES AVAILABLE ON REQUEST.



**Collar flanges UNI EN 1092-1 PN16**

DN	Ø TUBE	d1
	ISO	ISO
10	17,2	18
15	21,3	22
20	26,9	27,5
25	33,7	34,5
32	42,4	43,5
40	48,3	49,5
50	60,3	61,5
65	76,1	77,5
80	88,9	90,5
100	114,3	115,5
125	139,7	141,5
150	168,3	170,5
200	219,1	221,5
250	273	276,5
300	323,9	327,5
350	355,6	359,5
400	406,4	411
450	457,2	462
500	508	513,5
600	609,6	616,5
700	711,2	714,2
800	812,8	815,8
900	914,4	917,4
1000	1016,6	1019
1200	1220	1224
1400	1420	1424
1600	1620	1624
1800	1820	1824
2000	2020	2024

**Collar flanges UNI EN 1092-1 PN25**

DN	Ø TUBE	d1
	ISO	ISO
10	17,2	18
15	21,3	22
20	26,9	27,5
25	33,7	34,5
32	42,4	43,5
40	48,3	49,5
50	60,3	61,5
65	76,1	77,5
80	88,9	90,5
100	114,3	116,5
125	139,7	141,5
150	168,3	170,5
200	219,1	221,5
250	273	276,5
300	323,9	327,5
350	355,6	359,5
400	406,4	411
450	457,2	462
500	508	513,5
600	609,6	616,5
700	711,2	714,2
800	812,8	815,8
900	914,4	917,4
1000	1016,6	1019
1200	1220	1224
1400	1420	1424
1600	1620	1624
1800	1820	1824
2000	2020	2024

DIMENSIONAL TABLES AVAILABLE ON REQUEST.



**FLANGE GASKETS  
UNI PN 10 – PN -16**

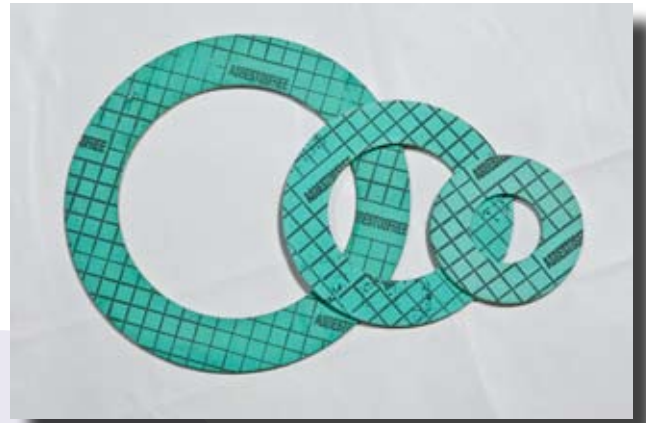
**Amiantus free.**

- Thickness : 2 mm
- Suitable for water, air, gas, oils, weak acids and chemical products in general.
- Max. Temperature 400°C
- Max. pressure 150 bar

**Rubber reinforced with canvas**

- Thickness: 3 mm, with textile insertions
- Suitable for water, air, saline solutions and weak acids
- Temperature: between -20°C and +70°C

AVAILABLE ALSO IN CARBOGRAPHITE.



Gaskets for flanges UNI EN 1092-1 PN10		
DN	External diameter	Internal diameter
15	50	20
20	60	25
25	70	30
32	82	38
40	92	45
50	107	60
65	127	76
80	142	89
100	162	110
125	192	133
150	218	159
175	248	191
200	273	216
250	328	267
300	378	318
350	438	368
400	490	420
450	535	462
500	595	520

Gaskets for flanges UNI EN 1092-1 PN16		
DN	External diameter	Internal diameter
15	50	20
20	60	25
25	70	30
32	82	38
40	92	45
50	107	60
65	127	76
80	142	89
100	162	110
125	192	133
150	218	159
175	248	191
200	273	216
250	330	267
300	385	318
350	445	368
400	497	420
450	550	462
500	618	520

Allowances: \_ + 1%



- Air treatment
- FRL groups
- Valves
- Cylinders
- Fittings
- Special products

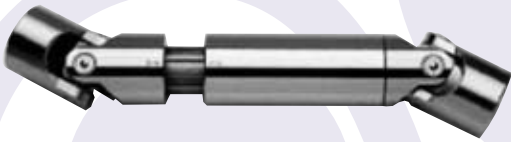
**TRANSMISSION COMPONENTS**



- Bearings
- Supports
- Gears
- Pinions
- Racks
- Chains
- Pulleys
- Reducers
- Variators
- Slide guides



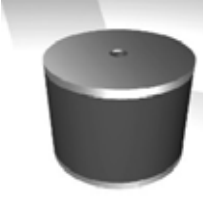
**CARDAN JOINTS**



**COMPENSATING JOINTS**





CYLINDRICAL ANTIVIBRATION COMPONENTS			
M-M TYPES	M-F TYPES	F-F TYPES	M-G TYPES
			
Ø x h x g	Ø x h x g	Ø x h x f	Ø x h x f
15x15xM4X10	15x15xM4X10	15x15xM4	20x15xM6X14
15x15xM5X10	20x15xM6X14	20x25xM6	25x20xM6X14
15x20xM5X10	20x20xM6X14	25x30xM6	30x20xM8X18
20x10xM6X12	20x25xM6X14	30x20xM8	30x30xM8X23
20x15xM6X14	20x30xM6X14	30x30xM8	40x20xM8X23
20x20xM6X14	20x15xM6X14	40x30xM8	40x30xM8X23
20x25xM6X14	25x20xM6X18	50x40xM10	50x20xM10X23
20x30xM6X14	25x20xM8X18	100x60xM16	50x30xM10X23
25x15xM6X14	25x25xM6X18		50x40xM10X23
25x20xM6X18	25x30xM6X18		50x50xM10X23
25x25xM8X18	30x15xM8X18		60x50xM10X23
25x25xM6X18	30x20xM8X23		75x30xM12X47
25x30xM6X18	30x30xM8X23		75x40xM12X47
25x35xM6X18	30x40xM8X23		75x50xM12X47
30x15xM8X18	40x30xM8X23		100x40xM16X47
30x20xM8X23	40x40xM8X23		100x50xM16X47
30x30xM6X23			
30x30xM8X23			
30x40xM8X23			
40x20xM8X23			
40x30xM8X23			
40x30xM10X23			
40x35xM8X23			
40x40xM8X23			
50x20xM10X23			
50x30xM10X23			
50x40xM10X23			
50x45xM10X23			
50x50xM10X23			













**ROTOFLES RICAMBI**  
products and spare parts for printing machines

Rotofles Ricambi snc di Ernestino Marchini & C.  
Head quartier: via Milano 18 / E - 26100 Cremona Italy  
Sales office: viale dell'Artigianato, 30/32 - 29100 Piacenza Italy  
Tel. +39 0523.824664 - Fax +39 0523.817777  
[www.rotofles.it](http://www.rotofles.it) - e-mail: [info@rotofles.it](mailto:info@rotofles.it)